

Prohibited Areas for Freedom Camping Westland District

Legal road opposite 6440 Otira Highway, Adjacent to Otira Hotel, Otira
Reason: Protection (kiwi habitat) and safety (link to railway sidings and rail corridor, natural hazards including flooding and landslips)



Prohibited Area No. 1

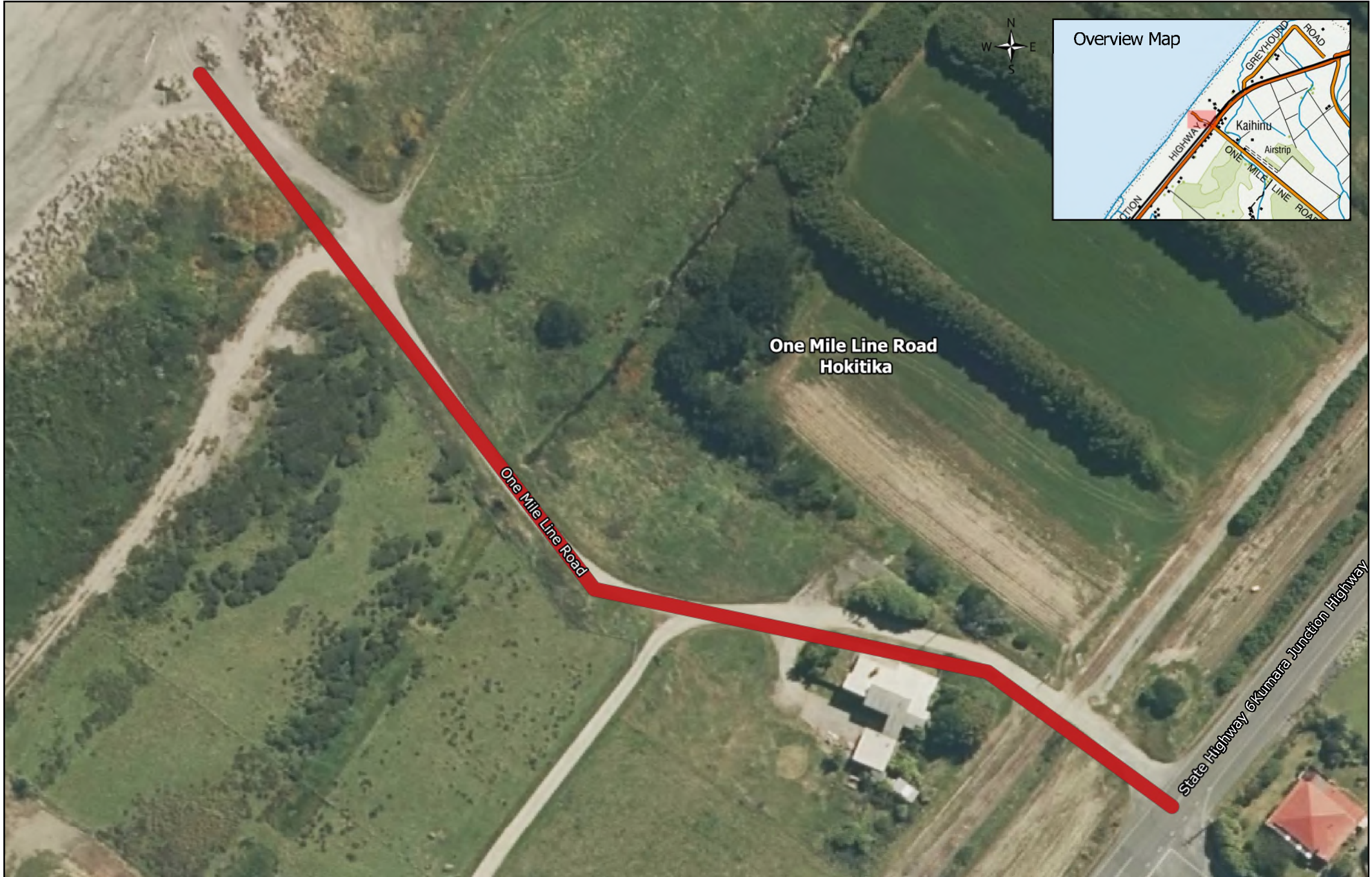
Prohibited Areas for Freedom Camping Westland District

Serpentine Road and beach, Kumara Junction
Reason: Access and safety (narrow road and prone to coastal inundation)



Prohibited Areas for Freedom Camping Westland District

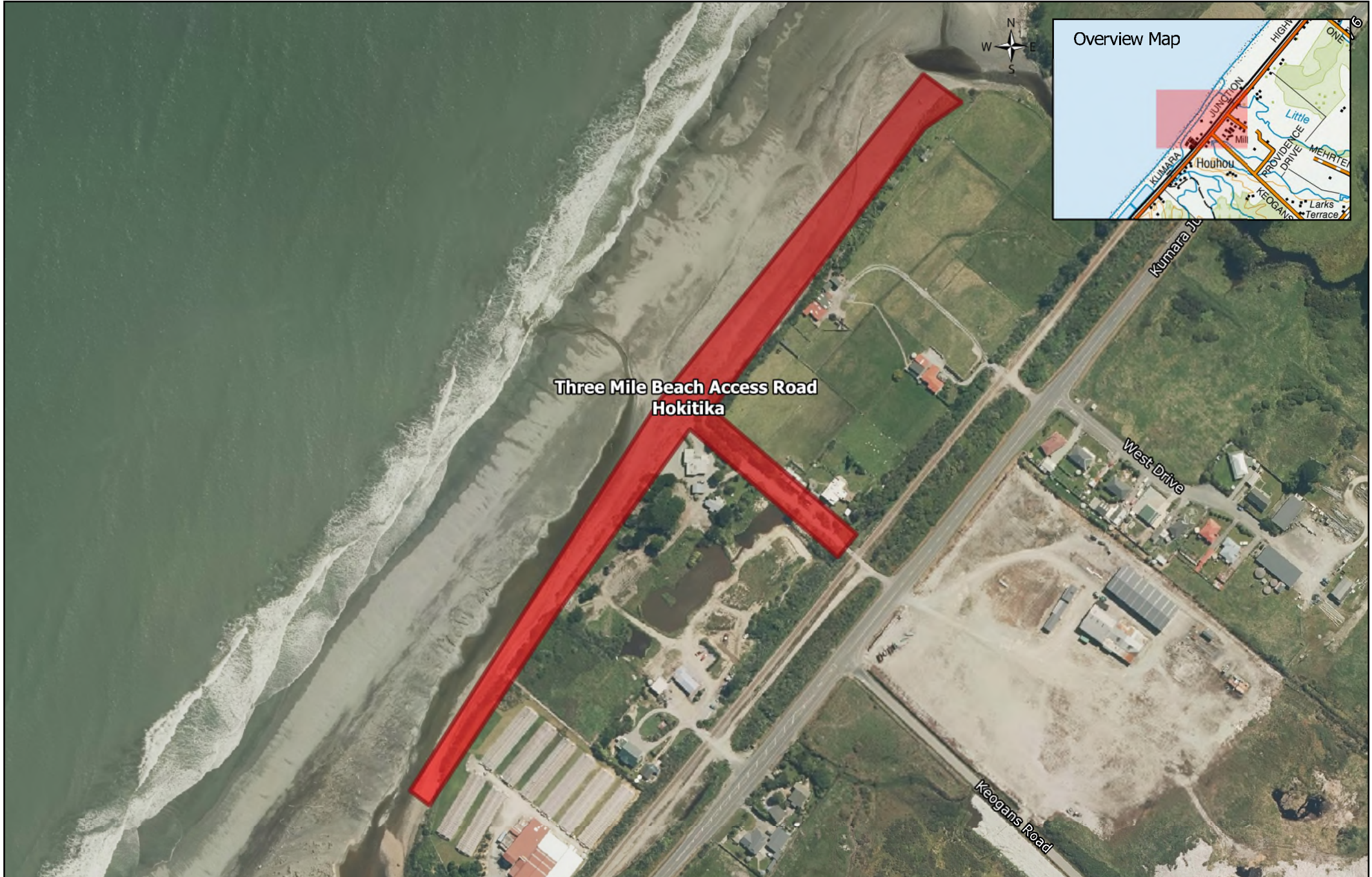
One Mile Line Road, Hokitika
Reason: Access and safety (narrow, uneven road)



Prohibited Area No. 3

Prohibited Areas for Freedom Camping Westland District

Three Mile Beach Access Road, Hokitika
Reason: Access and safety (narrow, uneven road)



Prohibited Areas for Freedom Camping Westland District

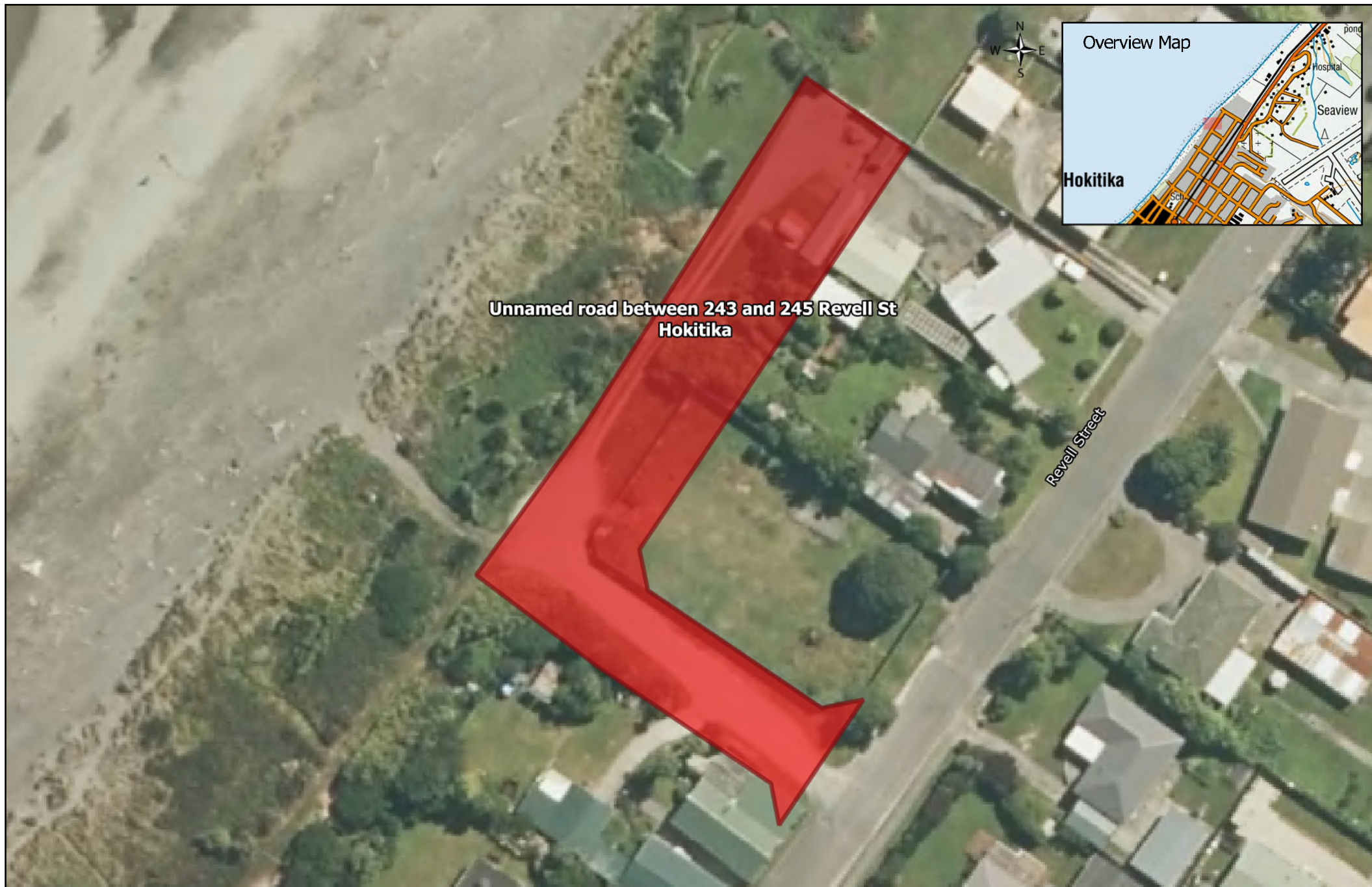
Richards Drive west of Revell St, Hokitika
Reason: Access and safety (narrow, uneven road)



Prohibited Area No. 5

Prohibited Areas for Freedom Camping Westland District

Unnamed road between 243 and 245 Revell St, Hokitika
Reason: Access and safety (narrow, uneven road)



Prohibited Areas for Freedom Camping Westland District

Tudor Street beach access west of Revell St, Hokitika
Reason: Access and safety (narrow, uneven road)



Prohibited Areas for Freedom Camping Westland District

Hampden Street beach access west of Revell St, Hokitika
Reason: Access and safety (narrow, uneven road)



Prohibited Areas for Freedom Camping Westland District

Stafford Street west of Revell St, Hokitika
Reason: Access (high demand for locals and visitors)



Prohibited Areas for Freedom Camping Westland District

Entirety of Beach Street, Hokitika
Reason: Access (high demand for locals and visitors)

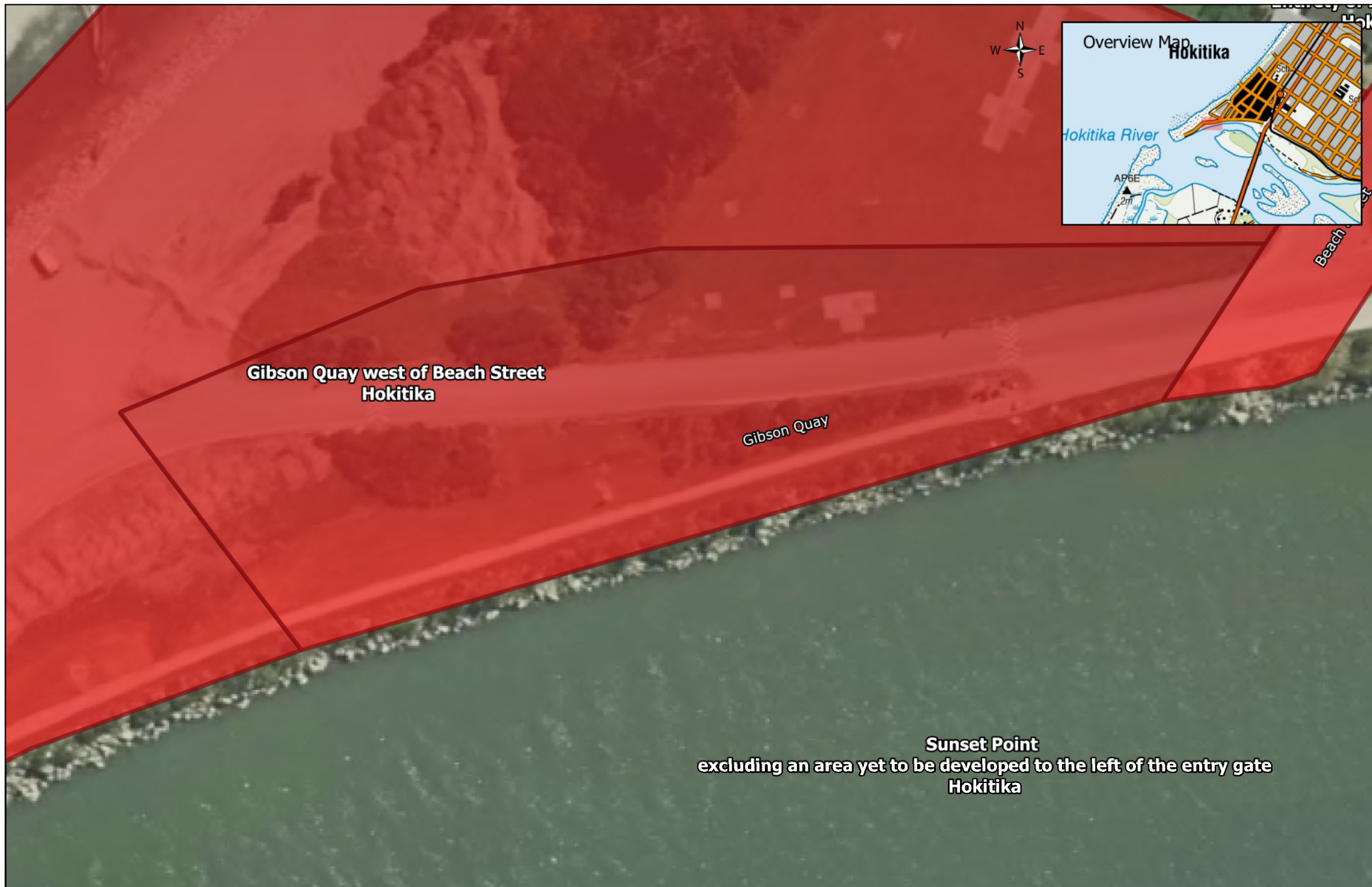


Including an area yet to be developed to the left of the entry gate

Prohibited Area No. 10

Prohibited Areas for Freedom Camping Westland District

Gibson Quay west of Beach Street, Hokitika
Reason: Access (high demand for locals and visitors)



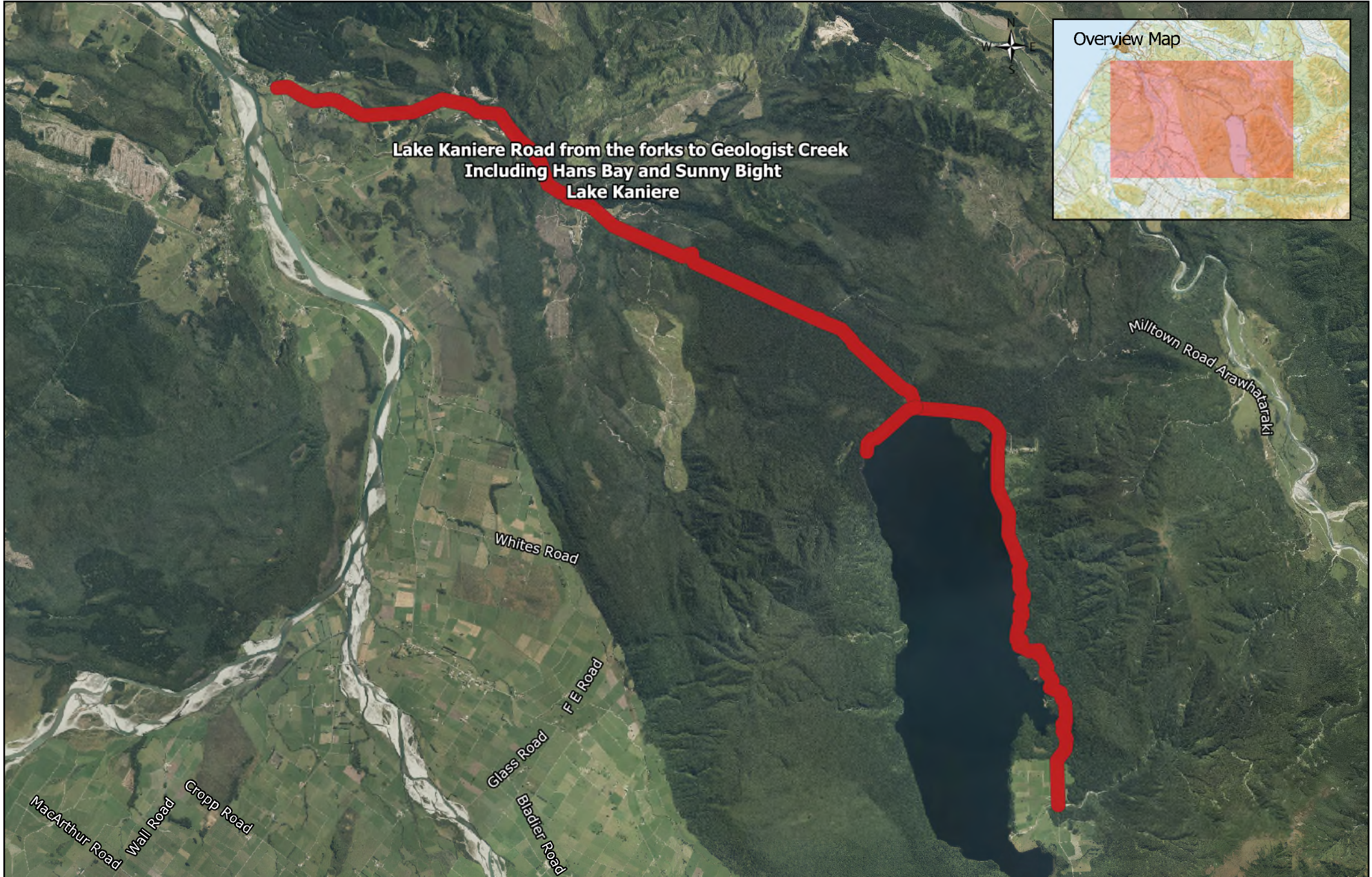
Prohibited Areas for Freedom Camping Westland District

Sunset Point, excluding an area yet to be developed to the left of the entry gate, Hokitika
Reason: Access (high demand for locals and visitors)



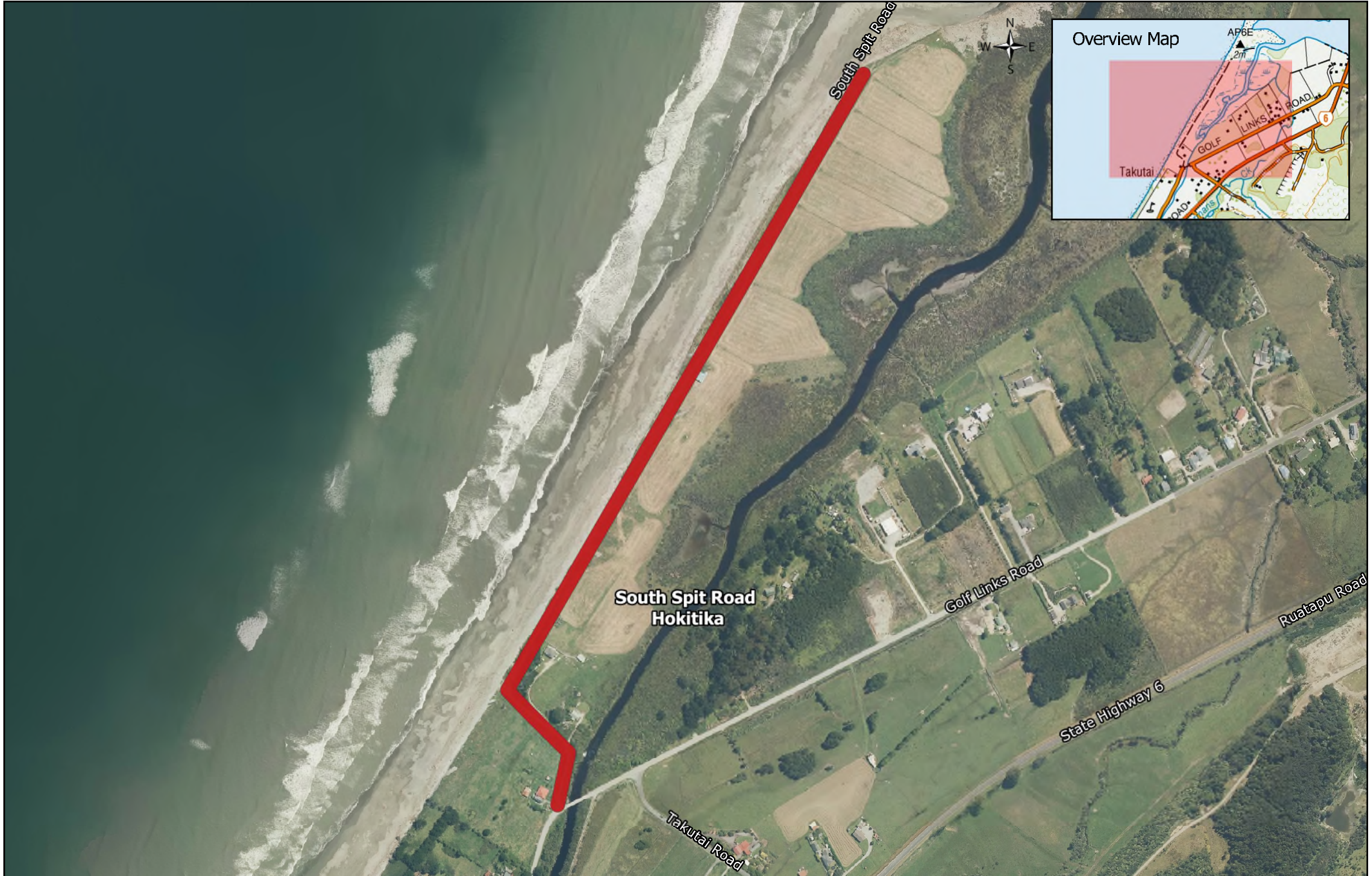
Prohibited Areas for Freedom Camping Westland District

Lake Kaniere Road from the forks to Geologist Creek, Including Hans Bay and Sunny Bight, Lake Kaniere
Reason: Access and safety (narrow, uneven road)



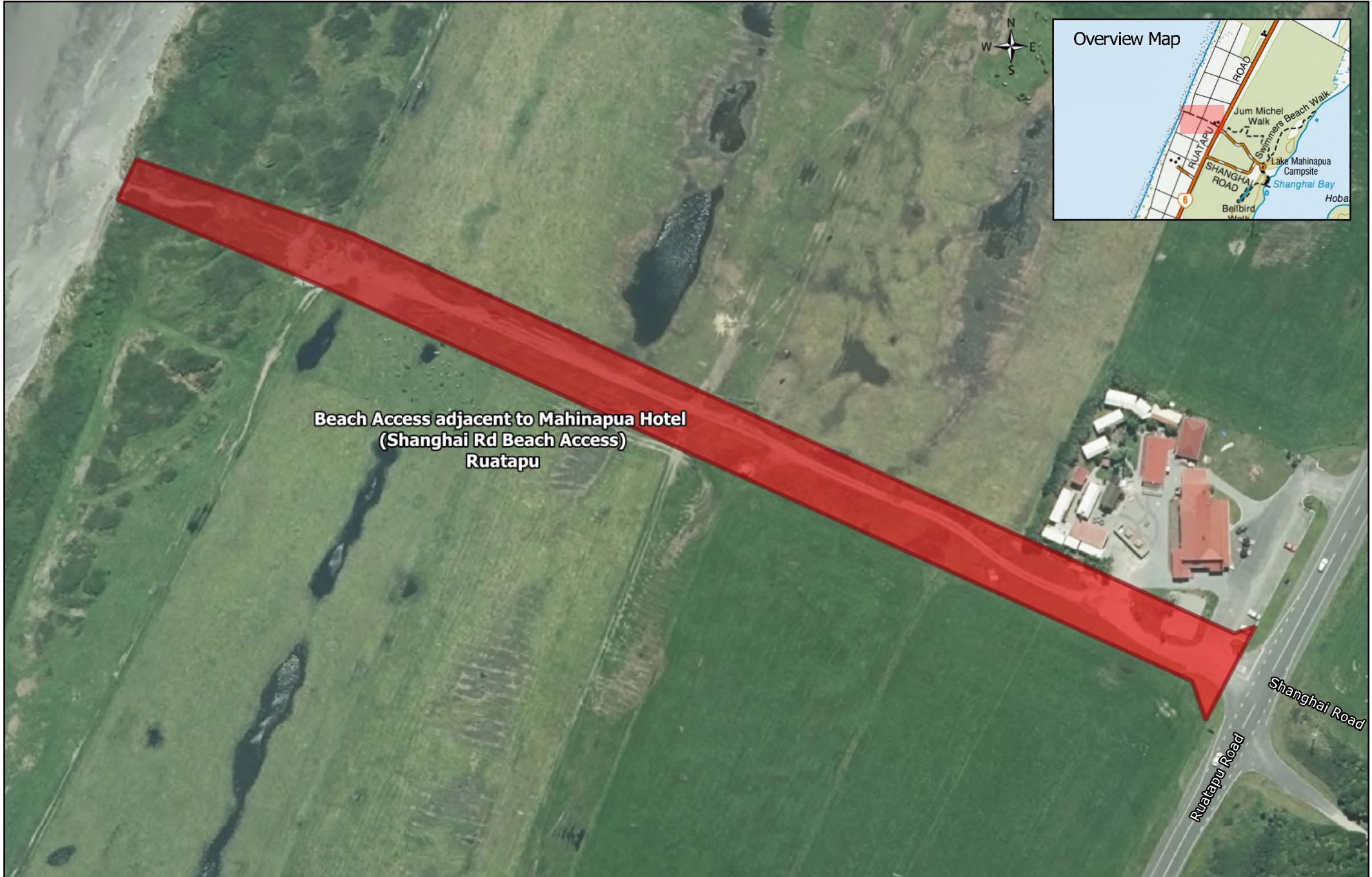
Prohibited Areas for Freedom Camping Westland District

South Spit Road, Hokitika
Reason: Access and safety (narrow, uneven road)



Prohibited Areas for Freedom Camping Westland District

Beach Access adjacent to Mahinapua Hotel, (Shanghai Rd Beach Access), Ruatapu
Reason: Access and safety (narrow, uneven road)



Prohibited Areas for Freedom Camping Westland District

Paiere Road, Ruatapu
Reason: Access and safety (narrow road, part of West Coast Wilderness Trail)



Prohibited Area No. 16

Prohibited Areas for Freedom Camping Westland District

Butlers Road beach access west of SH6, Ruatapu
Reason: Access and safety (narrow, uneven road)



Prohibited Areas for Freedom Camping Westland District

Ross Cemetery, Ross
Reason: Protection, access and safety (culturally sensitive site, with narrow, steep access road)



Prohibited Areas for Freedom Camping Westland District

Ross Beach Road, Ross
Reason: Access and safety (narrow, uneven road)



Prohibited Areas for Freedom Camping Westland District

All of Okarito Village (except the domain), Okarito
Reason: Protection, access and safety (Environmentally sensitive site (kiwi habitat), with narrow access road)



Prohibited Areas for Freedom Camping Westland District

Forks-Okarito Road, Okarito
Reason: Protection, access and safety (Environmentally sensitive site (kiwi habitat), with narrow access road)



Prohibited Area No. 20

Prohibited Areas for Freedom Camping Westland District

SH 6 between MacDonalds Creek to Docherty Creek Rd, Franz Josef Glacier
Reason: Access and safety (very busy road with poor visibility, uneven road, and flood risk)



Prohibited Areas for Freedom Camping Westland District

Waiho Flat Road, Franz Josef Glacier
Reason: Access and safety (narrow, uneven road, and flood risk)



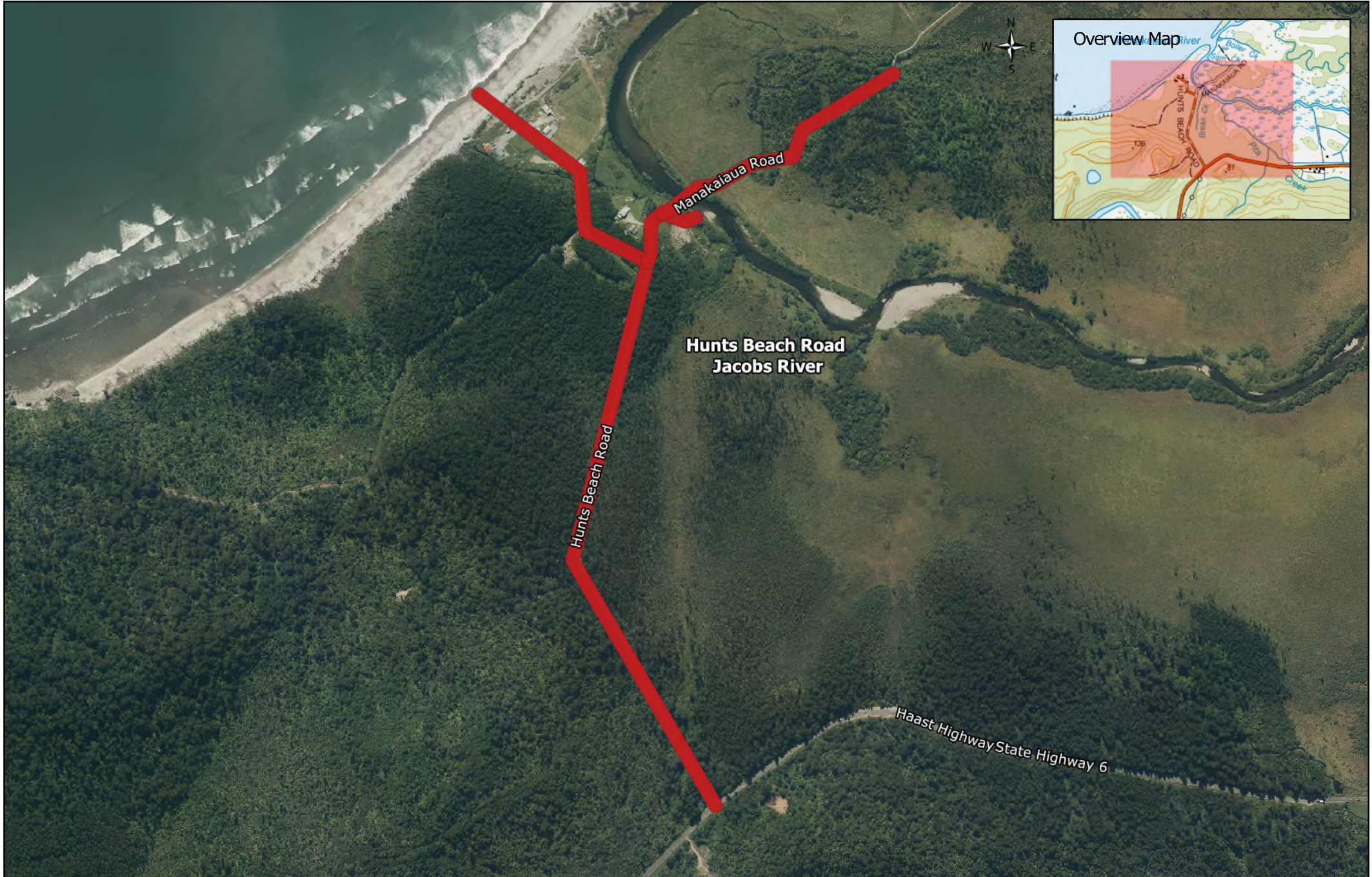
Prohibited Areas for Freedom Camping Westland District

Docherty Creek Road, Franz Josef Glacier
Reason: Access and safety (narrow, uneven road, and flood risk)



Prohibited Areas for Freedom Camping Westland District

Hunts Beach Road, Jacobs River
Reason: Protection, access and safety (culturally sensitive site, with narrow access road)



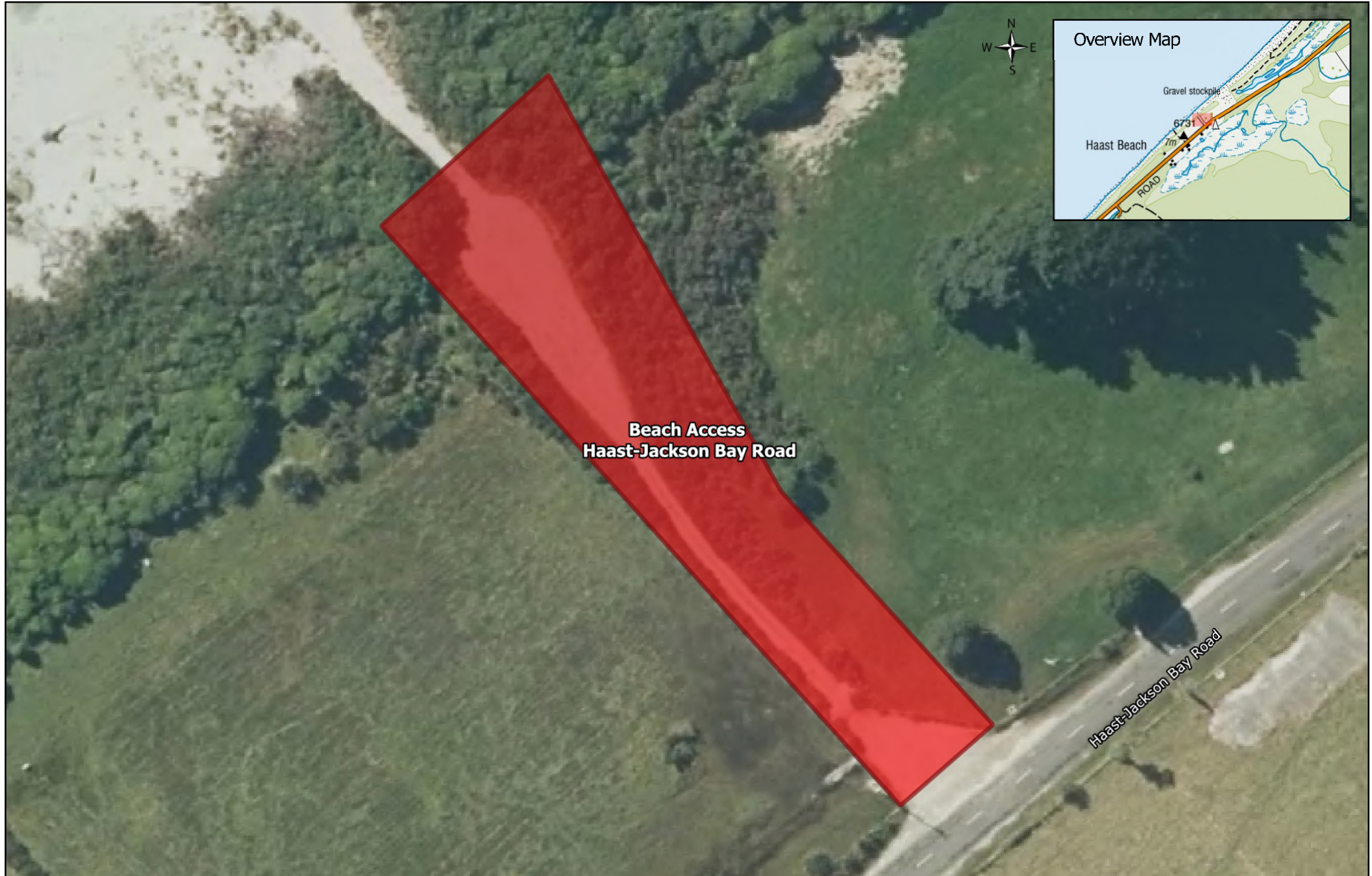
Prohibited Areas for Freedom Camping Westland District

Beach Access, Haast-Jackson Bay Road
Reason: Access and safety (narrow, uneven roads)



Prohibited Areas for Freedom Camping Westland District

Beach Access, Haast-Jackson Bay Road
Reason: Access and safety (narrow, uneven roads)



Prohibited Areas for Freedom Camping Westland District

Beach Access, Haast-Jackson Bay Road
Reason: Access and safety (narrow, uneven roads)



Prohibited Areas for Freedom Camping Westland District

Beach Access, Haast-Jackson Bay Road
Reason: Access and safety (narrow, uneven roads)



Prohibited Areas for Freedom Camping Westland District

Beach Access, Haast-Jackson Bay Road
Reason: Access and safety (narrow, uneven roads)



Prohibited Areas for Freedom Camping Westland District

Beach Access, Haast-Jackson Bay Road
Reason: Access and safety (narrow, uneven roads)



Prohibited Area No. 30

Prohibited Areas for Freedom Camping Westland District

Okuru (All Roads), Jackson Bay
Reason: Access and safety (narrow, uneven roads)



Prohibited Areas for Freedom Camping Westland District

Okuru (All Roads), Jackson Bay
Reason: Access and safety (narrow, uneven roads)



Prohibited Areas for Freedom Camping Westland District

Beach Access, Haast-Jackson Bay Road
Reason: Access and safety (narrow, uneven roads)



Prohibited Areas for Freedom Camping Westland District

Beach Access, Haast-Jackson Bay Road
Reason: Access and safety (narrow, uneven roads)



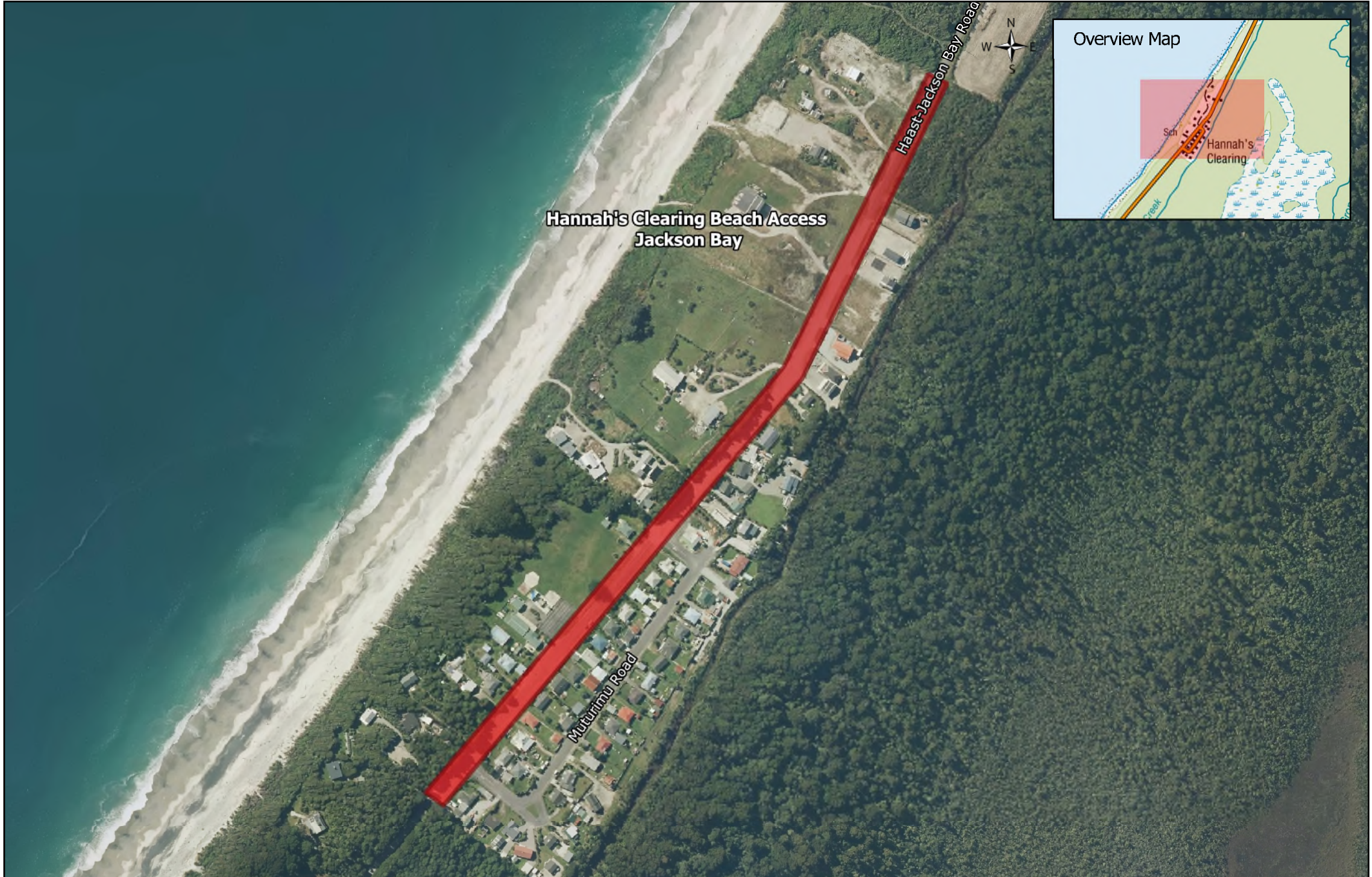
Prohibited Areas for Freedom Camping Westland District

Beach Access, Haast-Jackson Bay Road
Reason: Access and safety (narrow, uneven roads)



Prohibited Areas for Freedom Camping Westland District

Hannah's Clearing Beach Access, Jackson Bay
Reason: Access and safety (narrow, uneven roads)



Prohibited Areas for Freedom Camping Westland District

Beach Access, Haast-Jackson Bay Road
Reason: Access and safety (narrow, uneven roads)



Prohibited Areas for Freedom Camping Westland District

Entirety of Haast-Jackson Bay Road between Neils Beach and Jackson Bay Wharf, Jackson Bay
Reason: Safety (narrow road with rockfall risk)

