



AGENDA

RĀRANGI TAKE

NOTICE OF AN ORDINARY MEETING OF

West Coast Wilderness Trail Subcommittee

to be held on **Tuesday, 13 July 2021** commencing at **3.00pm** in the Council Chambers,
36 Weld Street, Hokitika and via Zoom

Chairperson: Cr Davidson

Members: His Worship the Mayor

Kw Madgwick

T. Brownlee, Trustpower

J. Gurden, Trail Manager, WCWT Trust

Kw Tumahai

Cr Haddock, Grey District Council

J. Wood, Chair, WCWT Trust

T. Thrupp, Operations Manager, DOC



In accordance with clause 25B of Schedule 7 of the Local Government Act 2002, members may attend the meeting by audio or audiovisual link.

Council Vision:

We work with the people of Westland to grow and protect our communities, our economy and our unique natural environment.

Purpose:

The Council is required to give effect to the purpose of local government as prescribed by section 10 of the Local Government Act 2002. That purpose is:

- (a) To enable democratic local decision-making and action by, and on behalf of, communities; and
- (b) To promote the social, economic, environmental, and cultural well-being of communities in the present and for the future.

1. NGĀ WHAKAPAAHA APOLOGIES

2. WHAKAPUAKITANGA WHAIPĀNGA DECLARATIONS OF INTEREST

Members need to stand aside from decision-making when a conflict arises between their role as a Member of the Council and any private or other external interest they might have. This note is provided as a reminder to Members to review the matters on the agenda, and assess and identify where they may have a pecuniary or other conflict of interest, or where there may be a perception of a conflict of interest.

If a member feels they do have a conflict of interest, they should publicly declare that at the start of the meeting or of the relevant item of business and refrain from participating in the discussion or voting on that item. If a member thinks they may have a conflict of interest, they can seek advice from the Chief Executive or the Group Manager: Corporate Services (preferably before the meeting). It is noted that while members can seek advice the final decision as to whether a conflict exists rests with the member.

3. NGĀ TAKE WHAWHATI TATA KĀORE I TE RĀRANGI TAKE URGENT ITEMS NOT ON THE AGENDA

Section 46A of the Local Government Official Information and Meetings Act 1987 states:

- (7) An item that is not on the agenda for a meeting may be dealt with at the meeting if –
 - (a) the local authority by resolution so decides, and
 - (b) the presiding member explains at the meeting at a time when it is open to the public, -
 - (i) the reason why the item is not on the agenda; and
 - (ii) the reason why the discussion of the item cannot be delayed until a subsequent meeting.
- (7A) Where an item is not on the agenda for a meeting, -
 - (a) that item may be discussed at the meeting if –
 - (i) that item is a minor matter relating to the general business of the local authority; and
 - (ii) the presiding member explains at the beginning of the meeting, at a time when it is open to the public, that the item will be discussed at the meeting; but
 - (b) No resolution, decision, or recommendation may be made in respect of that item except to refer that item to a subsequent meeting of the local authority for further discussion.

**4. NGĀ MENETI O TE HUI KAUNIHERA
MINUTES OF MEETINGS**

Minutes circulated separately via Microsoft teams/email

- **West Coast Wilderness Trail Subcommittee Meeting Minutes – 13 April 2021**

5. ACTION LIST (Page 5)

**6. NGĀ TĀPAETANGA
PRESENTATIONS**

- **West Coast Wilderness Trail Trust Update** (Pages 6 - 43)
Jackie Gurden, Trail Manager, West Coast Wilderness Trail Trust

**7. PŪRONGO KAIMAHI
STAFF REPORTS**

- **Cycleways Projects 21/22 & Carryover Projects** (Pages 44 - 54)
Scott Baxendale, Group Manager: District Assets, Westland District Council
- **Endorsement of Terms of Reference – Cycling And Walking Subcommittee and Appointment of Committee Members** (Pages 55 - 62)
Simon Bastion, Chief Executive, Westland District Council

**8. KA MATATAPU TE WHAKATAUNGA I TE TŪMATANUI
RESOLUTION TO GO INTO PUBLIC EXCLUDED**

(to consider and adopt confidential items)

Resolutions to exclude the public: Section 48, Local Government Official Information and Meetings Act 1987.

The general subject of the matters to be considered while the public are excluded, the reason for passing this resolution in relation to each matter and the specific grounds under Section 48(1) of the Local Government Official Information and Meetings Act 1987 for the passing of the resolution are as follows:

Item No.	General subject of each matter to be considered	Reason for passing this resolution in relation to each matter	Ground(s) under Section 48(1) for the passing of this resolution
1.	Confidential Minutes – 13 April 2021	Good reason to withhold exist under Section 7	That the public conduct of the relevant part of the proceedings of the meeting would be likely to result in the disclosure of information for which good reason for withholding exists. Section 48(1)(a)

2.	West Coast Wilderness Trail Enhancement Update	Good reason to withhold exist under Section 7	That the public conduct of the relevant part of the proceedings of the meeting would be likely to result in the disclosure of information for which good reason for withholding exists.
			Section 48(1)(a)

This resolution is made in reliance on sections 48(1)(a) and (d) of the Local Government Official Information and Meetings Act 1987 and the particular interests or interests protected by section 7 of that Act, which would be prejudiced by the holding of the relevant part of the proceedings of the meeting in public are as follows:

Item No.	Interest
1, 2	Enable any local authority holding the information to carry on, without prejudice or disadvantage, negotiations (including commercial and industrial negotiations) (Section 7(2)(i))

**DATE OF NEXT WEST COAST WILDERNESS TRAIL SUBCOMMITTEE MEETING – 16 SEPTEMBER 2021
COUNCIL CHAMBERS, 36 WELD STREET, HOKITIKA AND VIA ZOOM**

13.07.21 – West Coast Wilderness Trail Subcommittee Action List

Date of Meeting		COMPLETED IN PROGRESS OVERDUE	Item	Action	Completion Date/Target Date	Officer	Status
1	13.10.20		Milltown Weir Crossing	Alternative routes to be presented to the Subcommittee for discussion.	December 2020	SB	Site visit completed, design under evaluation. Put on hold until further input completed.
2	13.10.20		Mahinapua Historic Bridge – Highway Crossing	The CE to provide an update to the Subcommittee about progress made on a safer crossing at the Mahinapua Historic Bridge, across the highway from the golf course.	December 2020	SB	Site visit in March and Stantec commissioned to complete a new design incorporating the hazard management.
3	03.12.20		West Coast Wilderness Trail 20 Year Workplan Update	1. Mahinapua Creek Track Board Walk: To be brought forward due to safety issues from flooding causing riders to divert off the track to the main highway– Bring forward to 2022/23 2. Move the Totara Bridge Project out to allow for the Mahinapua Creek Track Board Walk to be brought forward. The Totara Bridge Project risk to be reassessed.	Completed	SB	Revised plan completed. Require to be approved via LTP process.
4	13.04.21		WCWT Trail exiting onto state highway 6.	Assess zones down the trail that exit onto the state highway.	July 2021	SB	Further hazard assessments to be completed as part of a larger safety audit for the trail.
5	13.04.21		Trail Safety Audit	To be scheduled with Jackie Gurden and Destination Westland.	July 2021	SB	
6	13.04.21		Quarterly Track Maintenance Report from Destination Westland.	Report to be emailed to the committee	Completed	SB	Completed - Report received and loaded to Teams and emailed 10.06.21.

WEST COAST

WILDERNESS TRAIL

Monthly Report for West Coast Wilderness Trail Sub-Committee Meeting

Creation Date

Thursday 1st of July 2021

About the Survey Data

The data in this report is from the survey work undertaken by the West Coast Wilderness Trail Trust. The Trust gains email addresses from riders continually throughout the year. These are loaded into an app that sends an automated invitation from the Trail Manager to the rider. This is undertaken by professional research company in Wellington to provide feedback. All 22 Nga Haerenga New Zealand Great Riders participate. Results are electronically compiled on the first day of every month throughout the year.

Within this report are four sets of data as follows:

The West Coast Wilderness Trail data for the past twelve months (620 riders)

The West Coast Wilderness Trail data for the month just past (27 riders)

The New Zealand Cycle Trail collective results for all 22 Great rides in the last year (6012 riders)

The New Zealand Cycle Trail collective results for the 22 Great rides for the last month (295 riders)

The Wilderness Trail results are therefore being compared against the New Zealand Cycle Trails average.

Rider and survey numbers in the winter months are obviously less than in summer. The following warning is therefore placed on reports with a sample size below 30:

Note that results based on small sample sizes (less than $n=30$) should be treated as indicative and not conclusive.

Net Promoter Score©

Result — Completion Date: Is between 12 months ago on the first day of the month (01/07/2020) and the last day of last month (30/06/2021)

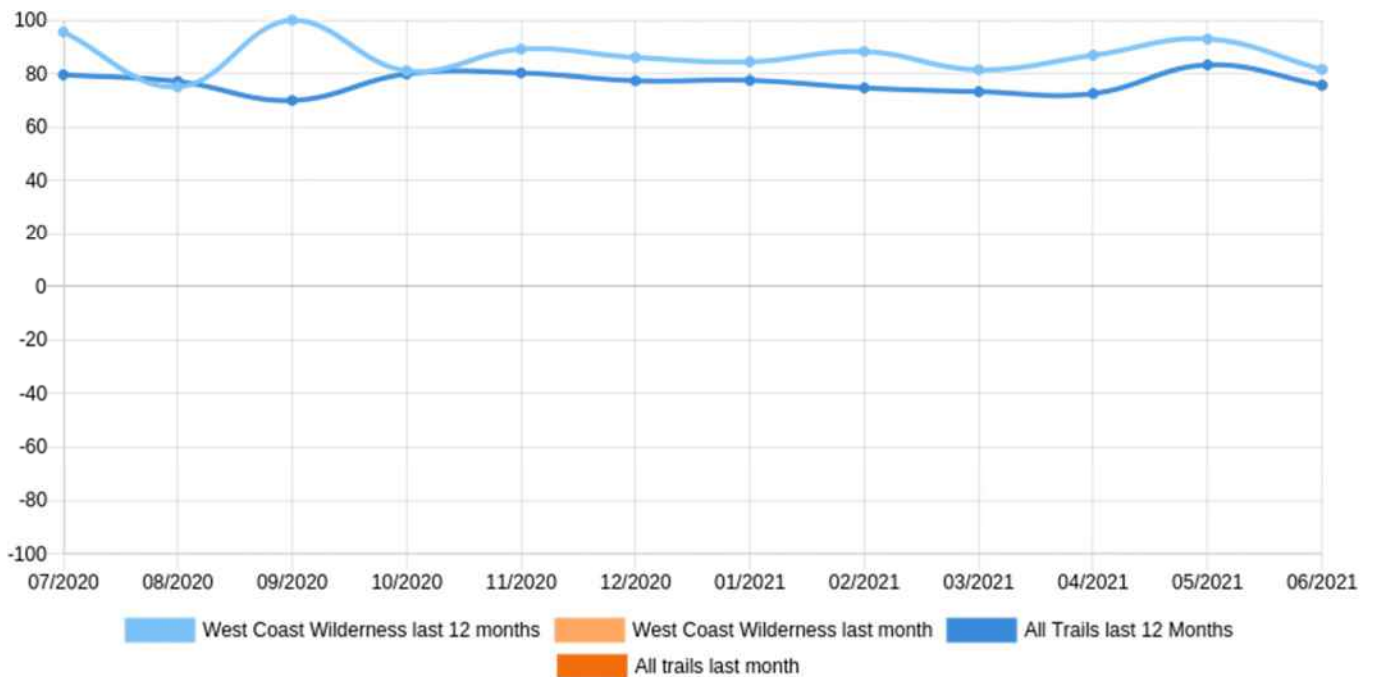
West Coast Wilderness last 12 months (n = 620)
 West Coast Wilderness last month (n = 27)
 All Trails last 12 Months (n = 6012)
 All trails last month (n = 295)

	West Coast Wilderness last 12 months	West Coast Wilderness last month	All Trails last 12 Months	All trails last month
Sample Size (n)	620	27	6012	295
	NPS ©	NPS ©	NPS ©	NPS ©
Net Promoter Score©	85.8	81.5	76.4	75.6

Net Promoter Score©

Result — Completion Date: Is between 12 months ago on the first day of the month (01/07/2020) and the last day of last month (30/06/2021)

West Coast Wilderness last 12 months (n = 620)
 West Coast Wilderness last month (n = 27)
 All Trails last 12 Months (n = 6012)
 All trails last month (n = 295)



Overall Satisfaction (1=very dissatisfied and 10=very satisfied)

Result — Completion Date: Is between 12 months ago on the first day of the month (01/07/2020) and the last day of last month (30/06/2021)

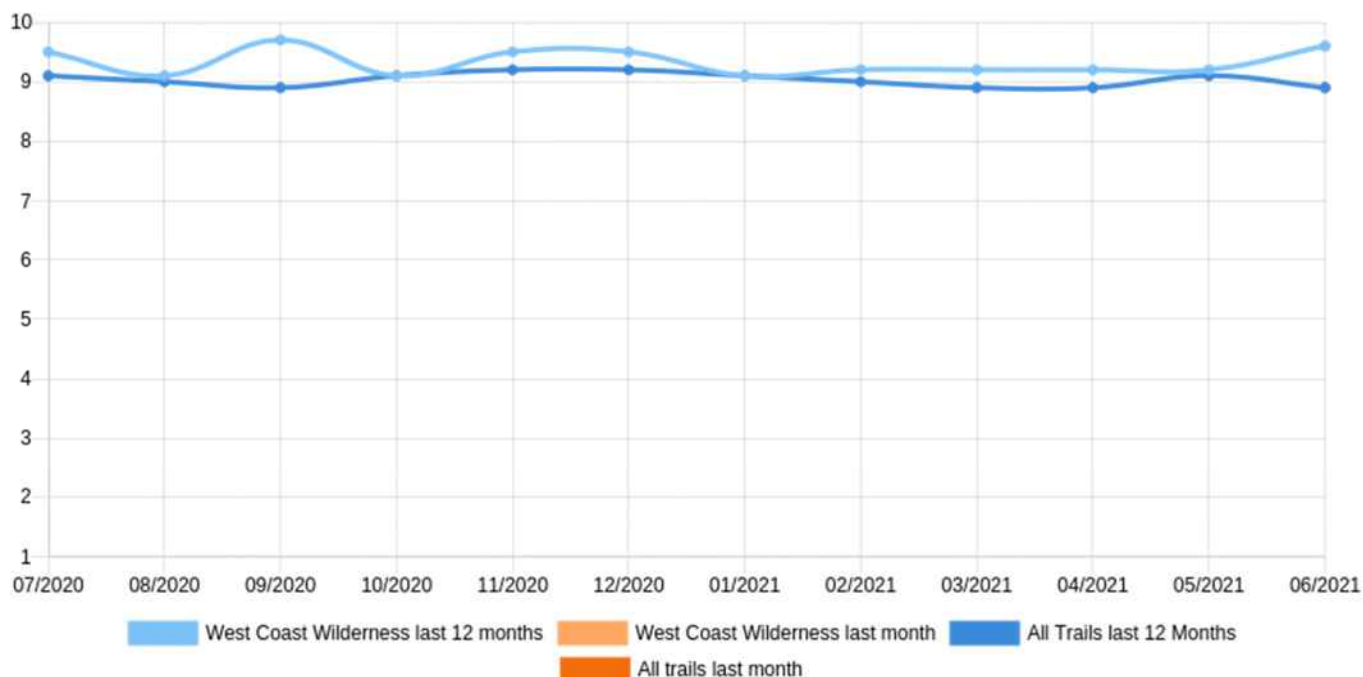
West Coast Wilderness last 12 months (n = 620)
 West Coast Wilderness last month (n = 27)
 All Trails last 12 Months (n = 6012)
 All trails last month (n = 295)

	West Coast Wilderness last 12 months	West Coast Wilderness last month	All Trails last 12 Months	All trails last month
Sample Size (n)	620	27	6012	295
	Average	Average	Average	Average
Overall Satisfaction	9.3	9.6	9	8.9

Overall Satisfaction — Average

Result — Completion Date: Is between 12 months ago on the first day of the month (01/07/2020) and the last day of last month (30/06/2021)

West Coast Wilderness last 12 months (n = 620)
 West Coast Wilderness last month (n = 27)
 All Trails last 12 Months (n = 6012)
 All trails last month (n = 295)



Channels generating awareness

Result — Completion Date: Is between 12 months ago on the first day of the month (01/07/2020) and the last day of last month (30/06/2021)

West Coast Wilderness last 12 months (n = 620)
 West Coast Wilderness last month (n = 27)
 All Trails last 12 Months (n = 6012)
 All trails last month (n = 295)

	West Coast Wilderness last 12 months	West Coast Wilderness last month	All Trails last 12 Months	All trails last month
Sample Size (n)	620	27	6012	295
	%	%	%	%
From friends, family or work colleagues (e.g. word of mouth)	68.4	55.6	62.8	60
From an information centre	9.7	0	10.5	6.1
The AA guide	9	14.8	5.9	6.4
From an accommodation provider (e.g. hotel, motel, backpackers)	1	0	1.7	3.4
Newspaper or magazine	10	7.4	9.7	9.2
Ngā Haerenga New Zealand Cycle Trails website	27.1	18.5	18	13.9
Travel guide/book	6.1	7.4	5.9	6.1
Trail brochure/map	11.3	7.4	13	8.8
Trail website	24.4	22.2	18.5	23.1
Social media (e.g. Facebook, Twitter, blog)	5.6	3.7	12.7	8.8
Other (please specify)	10.5	11.1	16	16.3

Channels generating awareness — Comments (West Coast Wilderness last month)

Result — Completion Date: Is between the first day of last month (01/06/2021) and the last day of last month (30/06/2021)

West Coast Wilderness Trail
(n = 3)

#	Other
1	Search on the Internet for Bike tracks in the South Island.
2	Booked A2O with Cycle Journeys and found WCWT trip on their website
3	internet search

Local or visitor to area

Result — Completion Date: Is between 12 months ago on the first day of the month (01/07/2020) and the last day of last month (30/06/2021)

West Coast Wilderness last 12 months
(n = 620)
West Coast Wilderness last month
(n = 27)
All Trails last 12 Months (n = 6012)
All trails last month (n = 295)

	West Coast Wilderness last 12 months	West Coast Wilderness last month	All Trails last 12 Months	All trails last month
Sample Size (n)	620	27	6012	295
	%	%	%	%
I live in the area	2.4	0	35.9	26.1
I was visiting the area	97.6	100	64.1	73.9

Trail influence on visiting the area

Result — Completion Date: Is between 12 months ago on the first day of the month (01/07/2020) and the last day of last month (30/06/2021)

West Coast Wilderness last 12 months
(n = 605)
West Coast Wilderness last month
(n = 27)
All Trails last 12 Months (n = 3853)
All trails last month (n = 218)

	West Coast Wilderness last 12 months	West Coast Wilderness last month	All Trails last 12 Months	All trails last month
Sample Size (n)	605	27	3853	218
	%	%	%	%
Yes - I was visiting the area only/mainly because of trail	84.8	88.9	75.9	85.3
No - I was already visiting or had planned to visit for other reasons	15.2	11.1	24.1	14.7

Trail use

Result — Completion Date: Is between 12 months ago on the first day of the month (01/07/2020) and the last day of last month (30/06/2021)

West Coast Wilderness last 12 months
(n = 620)
West Coast Wilderness last month
(n = 27)
All Trails last 12 Months (n = 6012)
All trails last month (n = 295)

	West Coast Wilderness last 12 months	West Coast Wilderness last month	All Trails last 12 Months	All trails last month
Sample Size (n)	620	27	6012	295
	%	%	%	%
For exercise	36.9	44.4	53.2	53.2
For relaxation	41	44.4	42.6	34.6
To escape the pressures of daily life	0.6	14.8	2.4	24.1
To experience or learn about the natural environment	1.5	25.9	1.7	18.3
To experience or learn about local culture and heritage	1.1	18.5	1.4	15.6
To commute to/from school or work	0	0	1.5	0.3
To train for an event	1.1	0	6.3	3.4
To participate in an event	2.6	0	7.5	2.4
For a cycling holiday	76	88.9	36.8	53.6
For a walking holiday	1.5	0	2.4	1
Bikepacking	4.5	3.7	6.1	2
Sightseeing	30.3	40.7	23.5	32.2
To spend time/socialise with friends or family	37.6	55.6	32.9	43.1
Other (please specify)	1.5	3.7	4	6.1

Trail use — Comments (West Coast Wilderness last month)

Result — Completion Date: Is between the first day of last month (01/06/2021) and the last day of last month (30/06/2021)

West Coast Wilderness Trail
(n = 1)

#	Other
1	scenery

Main method of transport on the trail

Result — Completion Date: Is between 12 months ago on the first day of the month (01/07/2020) and the last day of last month (30/06/2021)

West Coast Wilderness last 12 months
(n = 620)
West Coast Wilderness last month
(n = 27)
All Trails last 12 Months (n = 6012)
All trails last month (n = 295)

	West Coast Wilderness last 12 months	West Coast Wilderness last month	All Trails last 12 Months	All trails last month
Sample Size (n)	620	27	6012	295
	%	%	%	%
Cycling, using a road/standard bike	8.4	7.4	8.6	4.4
Cycling, using a mountain bike	43.5	55.6	48.8	44.7
Cycling, using an e-bike/e-mountain bike	2.6	37	3.7	35.6
Cycling, using a hybrid bike	2.7	0	2.1	2.4
Cycling, using a bike modified for someone with a disability	0	0	0.1	0
Walking/hiking	0.5	0	8.3	9.2
Running	0	0	4.5	2.4
Cycling (on an e-bike)	24.5	0	13.5	0
Cycling the trail (on a e-mountain bike)	16.8	0	9.3	0
Other (please specify) e.g. using a tandem bike/folding bike/mobility scooter etc.	1	0	1.1	1.4

Nights stayed in the area

Result — Completion Date: Is between 12 months ago on the first day of the month (01/07/2020) and the last day of last month (30/06/2021)

West Coast Wilderness last 12 months
(n = 620)
West Coast Wilderness last month
(n = 27)
All Trails last 12 Months (n = 6012)
All trails last month (n = 295)

	West Coast Wilderness last 12 months	West Coast Wilderness last month	All Trails last 12 Months	All trails last month
Sample Size (n)	620	27	6012	295
	Average	Average	Average	Average
	4.5	5	3.5	4.4

Extended stay in area

Result — Completion Date: Is between 12 months ago on the first day of the month (01/07/2020) and the last day of last month (30/06/2021)

West Coast Wilderness last 12 months (n = 87)
 West Coast Wilderness last month (n = 0)
 All Trails last 12 Months (n = 826)
 All trails last month (n = 0)

	West Coast Wilderness last 12 months	West Coast Wilderness last month	All Trails last 12 Months	All trails last month
Sample Size (n)	87	0	826	0
	%	%	%	%
Yes	37.9		19.7	
No	62.1		80.3	

Extra nights in area

Result — Completion Date: Is between 12 months ago on the first day of the month (01/07/2020) and the last day of last month (30/06/2021)

West Coast Wilderness last 12 months (n = 620)
 West Coast Wilderness last month (n = 27)
 All Trails last 12 Months (n = 6012)
 All trails last month (n = 295)

	West Coast Wilderness last 12 months	West Coast Wilderness last month	All Trails last 12 Months	All trails last month
Sample Size (n)	620	27	6012	295
	Average	Average	Average	Average
	5		2.8	

Travel Party Numbers

Result — Completion Date: Is between 12 months ago on the first day of the month (01/07/2020) and the last day of last month (30/06/2021)

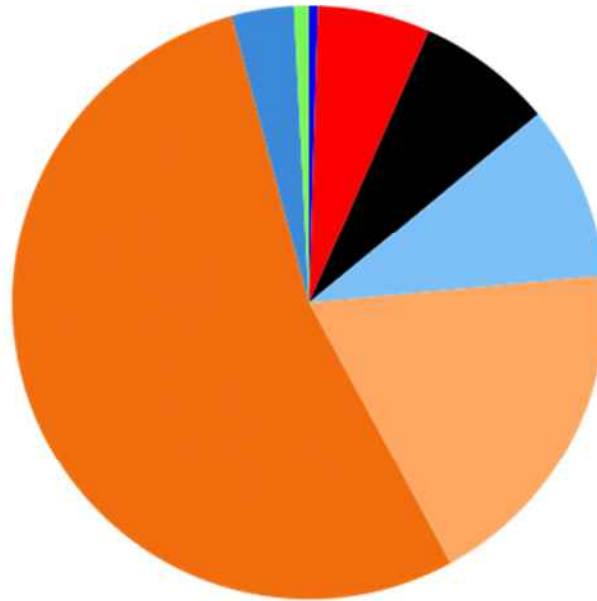
West Coast Wilderness last 12 months (n = 620)
 West Coast Wilderness last month (n = 27)
 All Trails last 12 Months (n = 6012)
 All trails last month (n = 295)

	West Coast Wilderness last 12 months	West Coast Wilderness last month	All Trails last 12 Months	All trails last month
Sample Size (n)	620	27	6012	295
	Average	Average	Average	Average
Adults, aged 15 years or more:	4.9	7.1	4.1	5.3
Children, aged 14 years or less:	0.2	0.2	0.4	0.3

Time spent on the trail

Result — Completion Date: Is between 12 months ago on the first day of the month (01/07/2020) and the last day of last month (30/06/2021)

West Coast Wilderness last 12 months
(n = 620)



■ Less than 1 hour (3)
 ■ 1-4 hours (half a day) (38)
 ■ 1 day (more than 4 hours) (46)
 ■ 2 days (59)
 ■ 3 days (115)
 ■ 4 days (333)
 ■ 5 days (21)
 ■ 6 days or more (5)

Time spent on the trail

Result — Completion Date: Is between 12 months ago on the first day of the month (01/07/2020) and the last day of last month (30/06/2021)

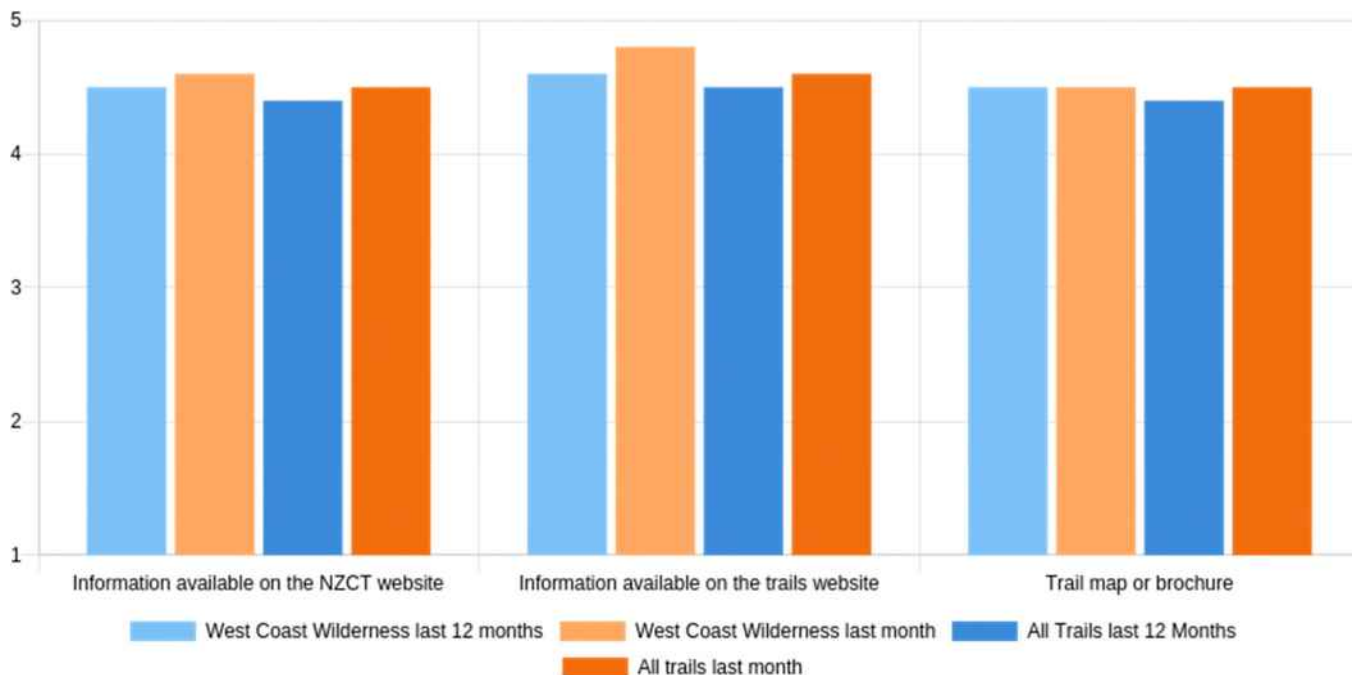
West Coast Wilderness last 12 months (n = 620)
 West Coast Wilderness last month (n = 27)
 All Trails last 12 Months (n = 6012)
 All trails last month (n = 295)

	West Coast Wilderness last 12 months	West Coast Wilderness last month	All Trails last 12 Months	All trails last month
Sample Size (n)	620	27	6012	295
	%	%	%	%
Less than 1 hour	0.5	0	3.6	3.4
1-4 hours (half a day)	6.1	0	38.5	28.5
1 day (more than 4 hours)	7.4	11.1	17.9	14.2
2 days	9.5	0	12.6	12.9
3 days	18.5	7.4	7.5	3.4
4 days	53.7	74.1	10.4	11.5
5 days	3.4	7.4	5	12.2
6 days or more	0.8	0	4.5	13.9

Ratings - Trail Information (1=very poor and 5=very good)

Result — Completion Date: Is between 12 months ago on the first day of the month (01/07/2020) and the last day of last month (30/06/2021)

West Coast Wilderness last 12 months (n = 620)
 West Coast Wilderness last month (n = 27)
 All Trails last 12 Months (n = 6012)
 All trails last month (n = 295)



Ratings - Trail Information (1=very poor and 5=very good)

Result — Completion Date: Is between 12 months ago on the first day of the month (01/07/2020) and the last day of last month (30/06/2021)

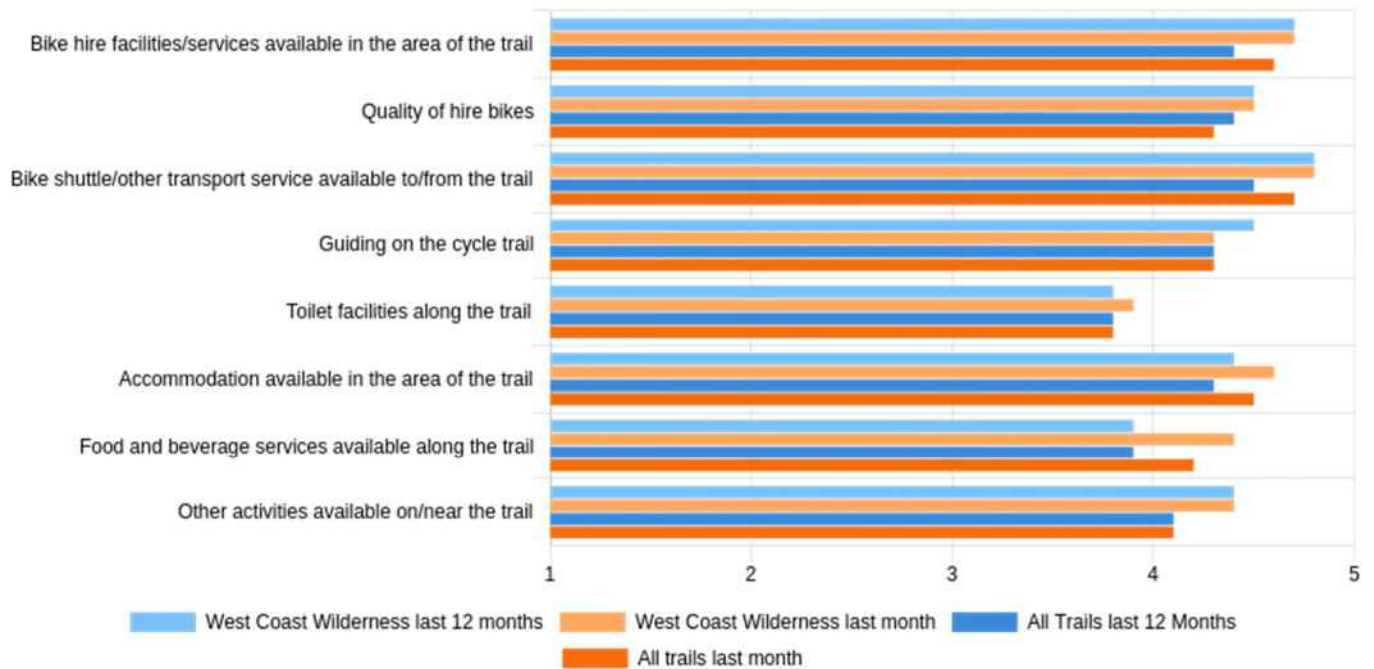
West Coast Wilderness last 12 months (n = 620)
 West Coast Wilderness last month (n = 27)
 All Trails last 12 Months (n = 6012)
 All trails last month (n = 295)

	West Coast Wilderness last 12 months	West Coast Wilderness last month	All Trails last 12 Months	All trails last month
Sample Size (n)	620	27	6012	295
	Average	Average	Average	Average
Information available on the NZCT website	4.5	4.6	4.4	4.5
Information available on the trails website	4.6	4.8	4.5	4.6
Trail map or brochure	4.5	4.5	4.4	4.5

Ratings - Facilities / Services On The Trail (1=very poor and 5=very good)

Result — Completion Date: Is between 12 months ago on the first day of the month (01/07/2020) and the last day of last month (30/06/2021)

West Coast Wilderness last 12 months (n = 620)
 West Coast Wilderness last month (n = 27)
 All Trails last 12 Months (n = 6012)
 All trails last month (n = 295)



Ratings - Facilities / Services On The Trail (1=very poor and 5=very good)

Result — Completion Date: Is between 12 months ago on the first day of the month (01/07/2020) and the last day of last month (30/06/2021)

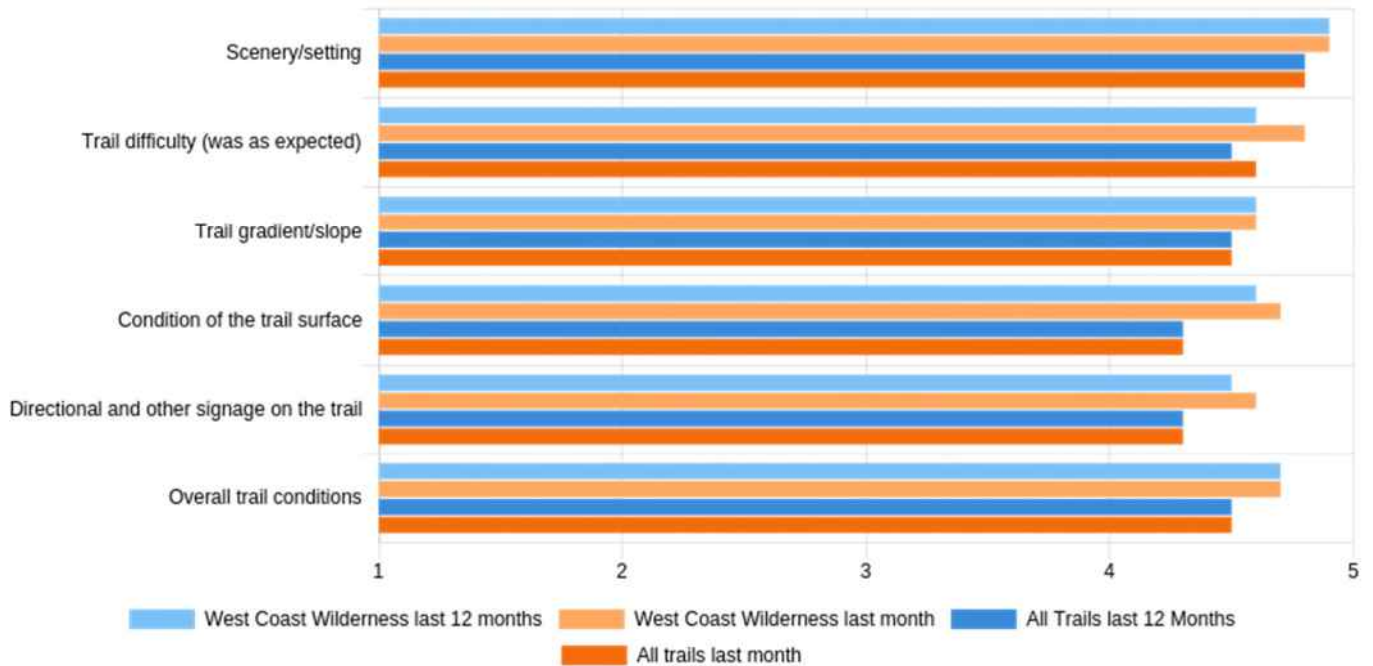
West Coast Wilderness last 12 months (n = 620)
 West Coast Wilderness last month (n = 27)
 All Trails last 12 Months (n = 6012)
 All trails last month (n = 295)

	West Coast Wilderness last 12 months	West Coast Wilderness last month	All Trails last 12 Months	All trails last month
Sample Size (n)	620	27	6012	295
	Average	Average	Average	Average
Bike hire facilities/services available in the area of the trail	4.7	4.7	4.4	4.6
Quality of hire bikes	4.5	4.5	4.4	4.3
Bike shuttle/other transport service available to/from the trail	4.8	4.8	4.5	4.7
Guiding on the cycle trail	4.5	4.3	4.3	4.3
Toilet facilities along the trail	3.8	3.9	3.8	3.8
Accommodation available in the area of the trail	4.4	4.6	4.3	4.5
Food and beverage services available along the trail	3.9	4.4	3.9	4.2
Other activities available on/near the trail	4.4	4.4	4.1	4.1

Ratings - The Trail (1=very poor and 5=very good)

Result — Completion Date: Is between 12 months ago on the first day of the month (01/07/2020) and the last day of last month (30/06/2021)

West Coast Wilderness last 12 months (n = 620)
 West Coast Wilderness last month (n = 27)
 All Trails last 12 Months (n = 6012)
 All trails last month (n = 295)



Ratings - The Trail (1=very poor and 5=very good)

Result — Completion Date: Is between 12 months ago on the first day of the month (01/07/2020) and the last day of last month (30/06/2021)

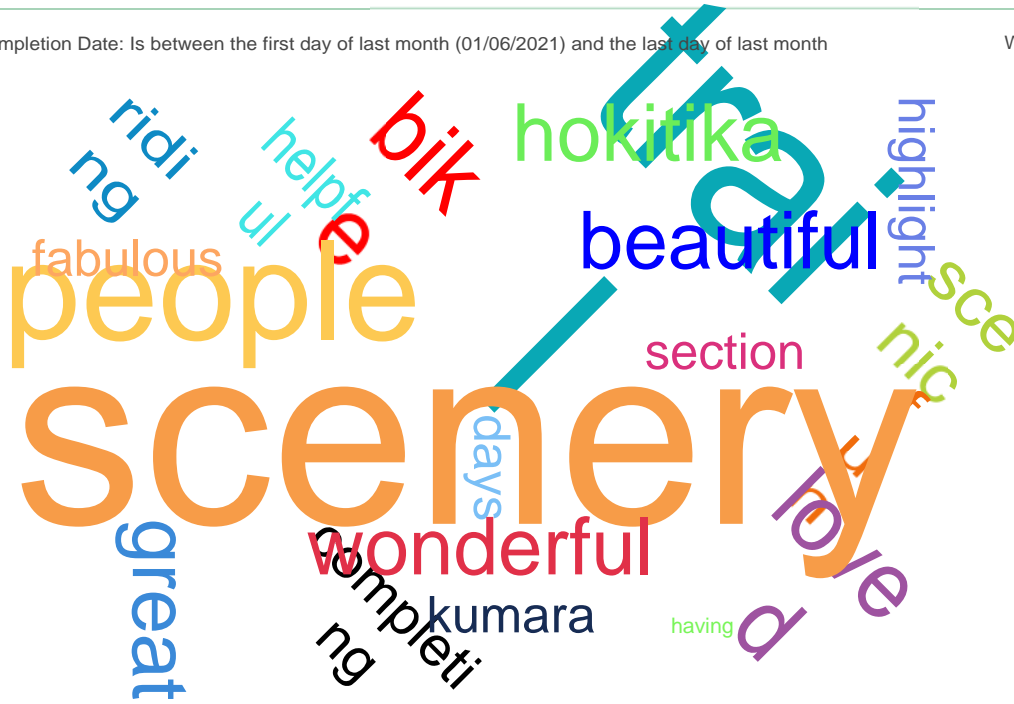
West Coast Wilderness last 12 months (n = 620)
 West Coast Wilderness last month (n = 27)
 All Trails last 12 Months (n = 6012)
 All trails last month (n = 295)

	West Coast Wilderness last 12 months	West Coast Wilderness last month	All Trails last 12 Months	All trails last month
Sample Size (n)	620	27	6012	295
	Average	Average	Average	Average
Scenery/setting	4.9	4.9	4.8	4.8
Trail difficulty (was as expected)	4.6	4.8	4.5	4.6
Trail gradient/slope	4.6	4.6	4.5	4.5
Condition of the trail surface	4.6	4.7	4.3	4.3
Directional and other signage on the trail	4.5	4.6	4.3	4.3
Overall trail conditions	4.7	4.7	4.5	4.5

Most enjoyed about experience - (last month)

Result — Completion Date: Is between the first day of last month (01/06/2021) and the last day of last month (30/06/2021)

West Coast Wilderness Trail
(n = 23)



Comments - Most enjoyed about experience (West Coast Wilderness last month)

Result — Completion Date: Is between the first day of last month (01/06/2021) and the last day of last month (30/06/2021)

West Coast Wilderness Trail
(n = 26)

#	Comments - Most enjoyed about experience
1	had a amazing trip and only one wet day highly recommend to friends
2	Scenery and the great trail condition.
3	Scenery, bush was stunning
4	I enjoyed everything
5	being in the bush. away from the city. perfect biking holiday
6	West coast scenery
7	scenery
8	I loved the variety of the terrain. Signage was very good (except for leaving Hokitika to Kumara, we had to ask about that) People were friendly and helpful. The track was in good condition
9	completing the ride and meeting others riding the trail.
10	Loved the trail! Have recommended it to a lot of people. The forest is beautiful in the Ross to Hokitika section - a particular highlight for me.
11	the changing scenery and the old mining history
12	scenic waterways stay, and the beautiful scenery throughout the trail
13	I enjoyed 'everything'. The scenery, helpful signposting, people we met. Wonderful.
14	treetops, bike trip Treetops to Hokitika
15	We had so much fun even tho it poured. Lovely people The accommodation just outside Hokitikja (can't remember the name, was amazing. Fabulous meal anbd beautiful accommodation
16	section from milltown to Kumara
17	I loved having time with our family, going at a slower pace, having fun and exploring an area of NZ we didn't know. We had fabulous hospitality at Scenic waterways.
18	being out in nature on a bike
19	The people and accomodation
20	variation of trail
21	Completing the trail was my biggest highlight
22	Scenery & quality of tracks
23	The scenery was wonderful especially the second and third days. The accommadation that was booked by trail journeys was fantastic.
24	Being on the West Coast of New Zealand riding my bike.
25	It was all great even though we got soaked during two days of the cycle.
26	the wonderful varity of accomadation options

Comments - What might have made the experience more enjoyable (West Coast Wilderness last month)

Result — Completion Date: Is between the first day of last month (01/06/2021) and the last day of last month (30/06/2021)

West Coast Wilderness Trail
(n = 22)

Comments - What might have made the experience more enjoyable

- 1 Spme of the trails were needing gravel - quite corrugated and the markers/signage near and in Greymouth was gone, unreadable or not clear enough
- 2 directional signs "track North" "track South" etc
- 3 a perfect time nothing to add.
- 4 nothing
- 5 nothing
- 6 The bike helmets had a bit of a smell, but we got used to it
- 7 a newer ebike for my wife
- 8 I don't know if there is much that could improve it from my perspective, I had a great time.
- 9 the surface on the last 5 kms or so into Greymouth could be a bit smoother
- 10 Scenery was out of this world. It reminded me how much I preferred the S.Island to the North.
- 11 trip Ross to Treetops boring prefer step thru bikes we had on AtoO a few years ago (my legs too short tonhave battery in middle
- 12 no rain hahahaha
- 13 take the trail off road from Hokitika to Milltown
- 14 We had one wet day...which we actually felt was pretty lucky.
- 15 trail signs should indicate direction you are travelling - eg at Kumara there were trail signs but having come from Cowboy Paradise it took a few seconds to work out where to head
- 16 nothing- loved it
- 17 Being more bike fit
- 18 It rains alot, so could the accomodation provide a means to dry our shoes, helmets etc
- 19 the end of the trail in greymouth it would be nice if there was a place to change clothes as it was pouring and the pub was closed where we were suppose to meet the shuttle.
- 20 Maybe riding another time of the year to experience the different seasonal changes.
- 21 The signage for one of the accommodation on the trail was unclear and we cycled past.

Gender

Result — Completion Date: Is between 12 months ago on the first day of the month (01/07/2020) and the last day of last month (30/06/2021)

West Coast Wilderness last 12 months
(n = 620)
West Coast Wilderness last month
(n = 27)
All Trails last 12 Months (n = 6012)
All trails last month (n = 295)

	West Coast Wilderness last 12 months	West Coast Wilderness last month	All Trails last 12 Months	All trails last month
Sample Size (n)	620	27	6012	295
	%	%	%	%
Male	42.3	33.3	47	45.4
Female	57.4	66.7	52.5	53.2
Gender diverse	0.3	0	0.5	1.4

Age

Result — Completion Date: Is between 12 months ago on the first day of the month (01/07/2020) and the last day of last month (30/06/2021)

West Coast Wilderness last 12 months
(n = 620)
West Coast Wilderness last month
(n = 27)
All Trails last 12 Months (n = 6012)
All trails last month (n = 295)

	West Coast Wilderness last 12 months	West Coast Wilderness last month	All Trails last 12 Months	All trails last month
Sample Size (n)	620	27	6012	295
	%	%	%	%
15 to 19 years	0	0	0.8	0.7
20 to 29 years	1.5	3.7	4.1	4.1
30 to 39 years	3.1	7.4	9.1	5.4
40 to 49 years	7.3	7.4	19.6	15.9
50 to 59 years	29.5	29.6	29.2	25.4
60 to 69 years	41.9	37	26.4	34.6
70 years or more	16.8	14.8	10.4	13.6
Would prefer not to say	0	0	0.4	0.3

Location

Result — Completion Date: Is between 12 months ago on the first day of the month (01/07/2020) and the last day of last month (30/06/2021)

West Coast Wilderness last 12 months
(n = 620)



Location

Result — Completion Date: Is between 12 months ago on the first day of the month (01/07/2020) and the last day of last month (30/06/2021)

West Coast Wilderness last 12 months
(n = 620)

West Coast Wilderness last month
(n = 27)

All Trails last 12 Months (n = 6012)
All trails last month (n = 295)

	West Coast Wilderness last 12 months	West Coast Wilderness last month	All Trails last 12 Months	All trails last month
Sample Size (n)	620	27	6012	295
	%	%	%	%
Australia	0.5	0	0.8	0.3
Austria	0	0	0	0
Canada	0	0	0.1	0
Czech Republic	0	0	0	0.3
France	0	0	0	0
Germany	0	0	0.1	0
Italy	0	0	0	0
Korea, Republic Of	0	0	0	0
New Zealand	99	92.6	98.5	98.6
South Africa	0	0	0	0
Spain	0	0	0	0
Sweden	0	0	0	0
United Arab Emirates	0	0	0	0
United Kingdom	0	0	0.2	0
United States	0.5	7.4	0.1	0.7

Location in New Zealand

Result — Completion Date: Is between 12 months ago on the first day of the month (01/07/2020) and the last day of last month (30/06/2021)

West Coast Wilderness last 12 months
(n = 614)



Location in New Zealand

Result — Completion Date: Is between 12 months ago on the first day of the month (01/07/2020) and the last day of last month (30/06/2021)

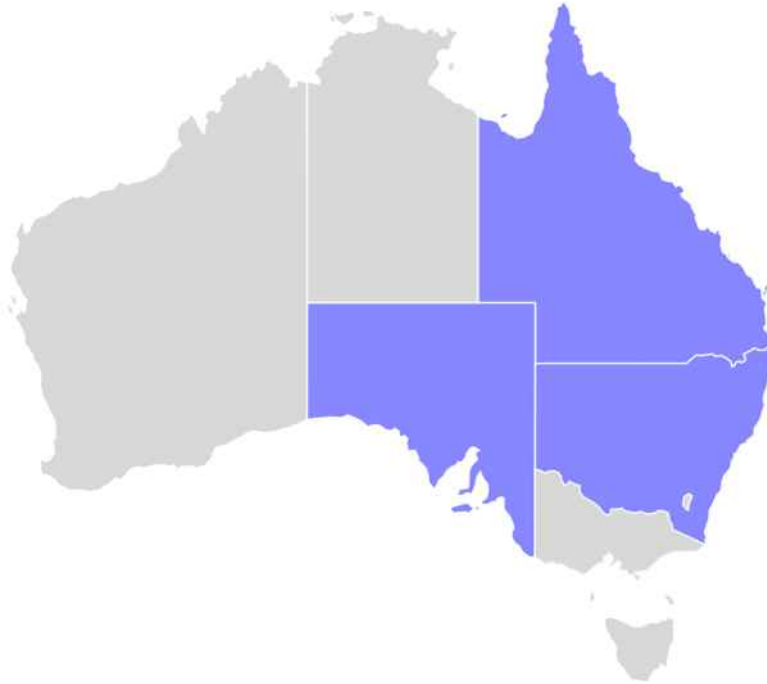
West Coast Wilderness last 12 months
(n = 614)
West Coast Wilderness last month
(n = 25)
All Trails last 12 Months (n = 5919)
All trails last month (n = 291)

	West Coast Wilderness last 12 months	West Coast Wilderness last month	All Trails last 12 Months	All trails last month
Sample Size (n)	614	25	5919	291
	%	%	%	%
Auckland	19.5	28	17	19.6
Bay Of Plenty	9	16	10	13.4
Canterbury	24.1	8	10.1	3.4
Chatham Islands Territory	0	0	0	0
Gisborne	1.1	4	0.5	1
Hawke's Bay	4.1	0	4.8	6.9
Manawatū-Whanganui	2.6	8	1.8	4.1
Marlborough	3.1	4	1.9	0.7
Nelson	4.2	0	5	2.1
Northland	1.3	0	2	3.1
Otago	6.2	4	13	4.8
Southland	0.2	0	3.1	1.4
Taranaki	2	8	1.5	2.1
Tasman	4.6	0	4.5	1.4
Waikato	6.7	16	12.3	25.4
Wairarapa	1	0	1	0.7
Wellington	8	4	10.7	10
West Coast	2.4	0	0.6	0

Location in Australia

Result — Completion Date: Is between 12 months ago on the first day of the month (01/07/2020) and the last day of last month (30/06/2021)

West Coast Wilderness last 12 months (n = 3)



Location in Australia

Result — Completion Date: Is between 12 months ago on the first day of the month (01/07/2020) and the last day of last month (30/06/2021)

West Coast Wilderness last 12 months (n = 3)
 West Coast Wilderness last month (n = 0)
 All Trails last 12 Months (n = 50)
 All trails last month (n = 1)

	West Coast Wilderness last 12 months	West Coast Wilderness last month	All Trails last 12 Months	All trails last month
Sample Size (n)	3	0	50	1
	%	%	%	%
Australian Capital Territory	0		2	100
New South Wales	33.3		20	0
Northern Territory	0		4	0
Queensland	33.3		42	0
South Australia	33.3		2	0
Victoria	0		26	0
Western Australia	0		4	0

Appendix

Segments

- **West Coast Wilderness last 12 months**

Organisation — Name: Is equal to 'West Coast Wilderness Trail'

Result — Completion Date: Is between 12 months ago on the first day of the month (01/07/2020) and the last day of last month (30/06/2021)

- **West Coast Wilderness last month**

Organisation — Name: Is equal to 'West Coast Wilderness Trail'

Result — Completion Date: Is between the first day of last month (01/06/2021) and the last day of last month (30/06/2021)

- **West Coast Wilderness Trail**

Organisation — Name: Is equal to 'West Coast Wilderness Trail'

Benchmarks

- **All Trails last 12 Months**

Result — Completion Date: Is between 12 months ago on the first day of the month (01/07/2020) and the last day of last month (30/06/2021)

- **All trails last month**

Result — Completion Date: Is between the first day of last month (01/06/2021) and the last day of last month (30/06/2021)

Charts

- **Channels generating awareness — Comments (West Coast Wilderness last month)**

Trail use — Comments (West Coast Wilderness last month)

Most enjoyed about experience - (last month)

Comments - Most enjoyed about experience (West Coast Wilderness last month)

What might have made the experience more enjoyable - (last month)

Comments - What might have made the experience more enjoyable (West Coast Wilderness last month)

Result — Completion Date: Is between the first day of last month (01/06/2021) and the last day of last month (30/06/2021)

- **All Other Charts**

Result — Completion Date: Is between 12 months ago on the first day of the month (01/07/2020) and the last day of last month (30/06/2021)

Appendix 1: Economic Assessment Report

Appendix 2: Quarterly Economic Contribution to the Area

West Coast Wilderness Trail Economic Assessment Report For Year End June 2019/2020



Introduction

1.1 Background

These reports were established in 2017 in a bid to measure the growth and impact of the West Coast Wilderness Trail over time. The intention was to take the measurement from the end of each season, that being 30 June each year. The data has been collated through results from the New Zealand Cycle Trail Inc. monthly surveys, trail counter statistics and feedback from Official Partners.

The report focuses on rider numbers, business growth, economic return, trail performance, rider demographics and market profile.

1.2 High-level Comparison 2017 - 2020

In 2017 the first economic assessment of the Wilderness Trail was prepared. This report marked a milestone in the trail. For the first time the impacts of the trail were brought together in a single document. It highlighted the estimated number of visiting riders on the trail to be 6,630-9,000 and 82 hire bikes. It also documented the growth in Kumara, the rebuild of the Theatre Royal Hotel, the beginning of the Wilderness Trail Shuttle and the West Coast Scenic Waterways along with the development of the Ross Top 10 Holiday Park. It highlighted over \$7 million invested in businesses around the trail and the employment of over 30 people directly by these businesses. It proved a turning point for the trail demonstrating its real economic value. The trail has gone on to become a leading economic tourism driver for the region. Those foundation businesses have grown significantly and more and more riders are estimated to be on the trail each year.

This year growth has continued, especially following the first Covid lockdown. The more sophisticated counters show visiting riders on the full trail estimated at 5,389 and around 14,505 visiting riders in total. Bike hire has grown to around 170 traditional bike and 50 e-bikes. While some accommodation businesses have met challenging times and some closed, Cycle Journeys has reported significant growth, Kiwi Journeys is expanding their presence, Glory Days bike hire has begun and the West Coast Scenic Waterways has continued to expand. With high numbers of local riders prominent on sections, particularly close to the towns, the trail has also become recognised for its role as a recreation asset for locals.

This 2019/20 report has been impacted by Covid-19 which saw an abrupt halt to visitors travelling to ride the trail from 23rd March. The country moved to Alert Level 2 on 13 May and down to Alert Level 1 on 8th June.

Highlights from the year are as follows:

	2019/20
Total rider numbers estimated at	14,505
Riders completing the full trail:	5,389
Average Spend per rider per day:	\$248
Average Stay on the trail:	3.8 nights
Direct Economic Return:	\$13 million +
Additional GDP generated to West Coast economy:	\$5.3 million
New Businesses Operating in the last year because of the trail:	2

1.3 Developing Data

The intention through these economic assessment reports is to establish a series of benchmark indications to monitor the trail's growth across many factors. Over time there have been shifts in the ability to collect some of this data in the same way i.e. apples with apples.

While the number of riders was only able to be estimated in the first reports, this benchmark from this year forward is able to be measured accurately at six points on the trail with a full year of data. These locations are Karoro, Taramakau, Kaniere Water Race, Kaniere Tram, Mahinapua and Ruatapu. A further counter has been installed at Kawhaka that will provide valuable data in the future.

The surveys undertaken with New Zealand Cycle Trail and Ministry of Business Innovation and employment (MBIE) are providing quality information about the rider market and the performance of many measures across the trail, coupled with the overall economic return from the trail.

The qualitative accounts of business development from owners are proving just as important as their quantitative statistics, providing excellent insights into the trail impacts.



2. Benchmark Indicators for 2019/20

2.1 Trail Rider Numbers

It is difficult to report the actual number of riders, runners and walkers on the trail as everyone has their own way of using the trail. Some visitors ride the trail one way in its entirety. Others ride sections that appeal to them. Locals ride, run and walk the trail largely in close proximity to their residence or over the sections they enjoy the most. In essence, everyone starts and finishes at different points.

We now have accurate data for over a year on those riding and walking the Karoro, Taramakau, Kaniere Tram, Kaniere Water Race, Mahinapua and Ruratapu sections of the trail. A counter has also been installed recently at Kawhaka. The data from those counters for the last year is outlined in Table 1 below.

In 2020 MBIE commissioned an analysis on trail data to determine the numbers of riders across the individual trails. This report calculated the total number of visitors riding the full trail as 5,389. This is calculated as 92% of the lowest counter number at Ruatapu. Ninety two percent is based on the calculation from the trail's survey data that 92% of riders are visitors. This is confirmed by the Trail Trust's estimates.

Total visiting riders on the trail have been calculated in the report at 14,505. This is based on a formula that takes the count from the three lowest counters, deducts the number of full trail riders (5,389) from each and multiplies the total by 92% which are estimated to be visitors. This methodology is questioned by the West Coast Wilderness Trail Trust as it misses the popular Mahinapua section, however, it is a benchmark that can be used over time to measure growth.

Table 1 contains an overview of the trail data for the year.

Table 1 Counter data on riders and cyclists 2019/20

Period	July 1, 2019 → June 30, 2020		
Site	Total	Average	Peak Count
WCW - Karoro	53960	147	430
WCW - Karoro Cyclist	28059	77	283
WCW - Karoro Pedestrian	25901	71	254
WCW - Taramakau	10195	28	228
WCW - Taramakau Cyclist	8596	23	223
WCW - Taramakau Pedestrian	1599	4	54
WCW - Hokitika Kaniere	35120	96	302
WCW - Hokitika Kaniere Cyclist	21050	58	210
WCW - Hokitika Kaniere Pedestrian	14070	38	123
WCW - Kaniere Water Race	11955	33	232
WCW - Kaniere Water Race Cyclist	7742	21	141
WCW - Kaniere Water Race Pedestrian	4213	12	91
WCW - Mahinapua	16764	46	202
WCW - Mahinapua Cyclist	13316	36	198
WCW - Mahinapua Pedestrian	3448	9	47
WCW - Ruatapu	8565	23	128
WCW - Ruatapu Cyclist	6659	18	114
WCW - Ruatapu Pedestrian	1906	5	51

Other Key Points

The Karoro section of the trail has the highest use at 53,960 people past the counter. Of those 52% were cyclists and 48% walkers or runners. This reflects the urban nature of this section and how trails can now be viewed in comparison for recreation to a modern netball or rugby field.

The Kaniere Tram replicates this trend in Hokitika where 35,120 people passed the counter, 60% cyclists and 40% walking.

Further from the main centres, Mahinapua saw 16,764 people with 80% as cyclists, while Taramakau had 10,195 or 84% cyclists and The Kaniere Water Race with 11,955 and 65% on bikes.

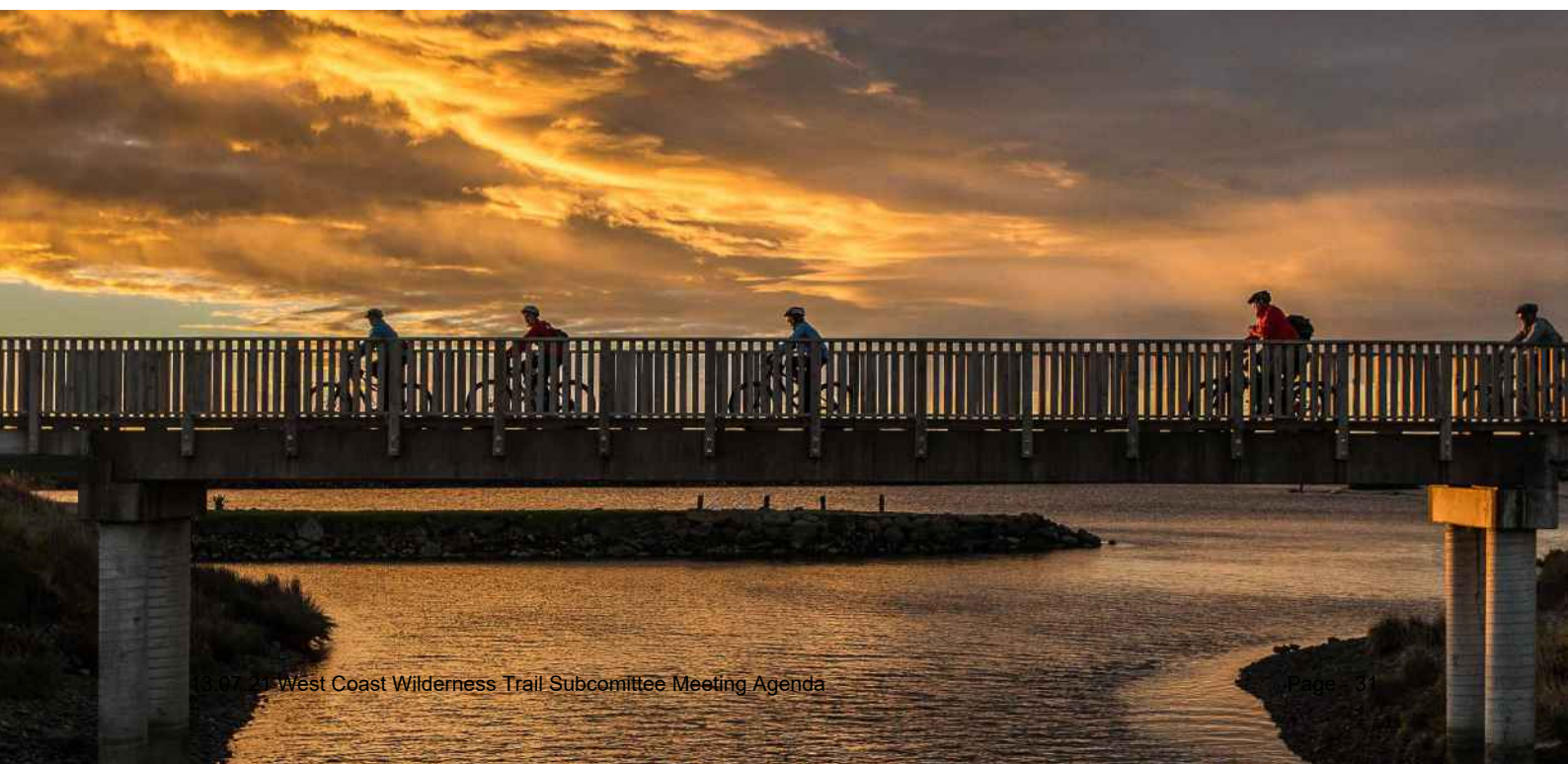
2.2 Business Growth

Covid-19 had an immediate impact on the trail with all domestic travel halting in the height of the season. While the initial impact was negative, some companies were able to reduce their losses by carrying bookings over to 2021 resulting in a significantly lower overall loss than expected. The Trail Trust lost very few Official Partners. As a direct result of Covid-19, going forward, growth is forecast as more people have picked up riding, no international travel is possible so New Zealanders are looking to domestic travel and the growth in e-bikes sales has risen significantly.

In terms of business growth, the trail saw the arrival of Glory Days bike hire in Hokitika, the expansion of Cycle Journeys with a depot in Greymouth proposed to open in November 2020, the expansion of West Coast Scenic Waterway and growth planned from Kiwi Journeys operations on the trail. In total, throughout the year, \$1 million has been invested by businesses operating directly on the trail. This includes buildings, accommodation, bikes and trailers, largely from the above operators.

Tour departures have increased from 25 to 370. This has largely been through the growth in Cycle Journeys. In line with this, rider numbers on tours have also increased from 284 to 1,577.

Hire bikes have also shown further increases with around 170 bikes for hire, up from 148. E-bikes are the big mover with numbers rising from 17 to 60.



Case Studies

Glory Days Urban Pedals

When Scott and Donna Baird sold their dairy farm and moved into Hokitika looking for business opportunities, they purchased a property on the main highway in Hokitika. It contained three flats that backed onto the main highway with a “scrubby” piece of grass. Seeing an opening for cycling in the town, the Baird’s wanted people to stay rather than driving straight through to the glaciers. Thinking this could have potential, Glory Days was launched with nine Dutch urban pedal bikes.



“We sat here for the first summer with a building and a piece of fake grass and watched 70% of the traffic go straight through, with some stopping for petrol but not turning into Hokitika” Donna reflects. “We diversified the business adapting the site with a laundromat and café”.

“The West Coast Wilderness Trail and cycling has become more and more popular. People have dusted off that old bike in the shed, we have all had to reset our lives and we are very busy.”

The couple have also recently gained their P licences and drive for Kiwi Journeys under contract to help meet the demand and growth now occurring from this new operator on the trail. *“We are thrilled to be on board with them.”* In addition to the, now 13 bikes, including 10 e-bikes, accommodation is the next step in the business with two of the three original flats about to be converted into high end apartments.

Cycle Journeys

The company entered the West Coast market three years ago for the 2017/18 season. They started business with the first dedicated depot on the trail, based in Hokitika’s Heritage New Zealand Category 2 listed Renton Building. They began with 60 traditional standard bikes and 10 e-bikes, two part-time staff and a target of 500 riders for the year. Turning the clock forward, the company now has 120



standard bikes, 43 e-bikes, 3 depot staff in Hokitika and 2-3 drivers. It has also well exceeded rider number expectations at the year end June 2020. Cycle Journeys has also purchased the West Coast Wilderness Trail Shuttle business, established a shuttle service for the Paparoa Track and plans to open a new depot that is being built in Greymouth.

West Coast Scenic Waterways

Established in 2016 following the development of the West Coast Wilderness Trail through their property, owners Cindy and Gavin Hopper quickly saw that the combination of natural wetlands, native rainforest, wildlife, and heritage sites could create a boat cruise, kayak hire and accommodation business on Mahinapua Creek. From this vision the Hoppers have developed a popular attraction offering:



- boat cruises
- kayak hire (5 tandem, 8 singles)
- bike hire (2 e-bikes, 12 mountain bikes)
- BnB hosting up to 6 guests
- 5 accommodation units hosting up to 16 visitors
- breakfast, lunch and dinner purchased by around 90% of guests

The couple have consent for a further 4 units, hosting up to a further 12 people. But the Hopper's plans don't stop there. Their love and respect for the environment, healthy living and the history of the area has been the catalyst for:

- the Boat House Interactive Centre (already consented)
- 4 Hot Tubs
- A wellbeing spa
- A Café with paddock to plate dining
- Aquaponics with sustainably farmed whitebait
- Art and Craft area
- Self-contained overnight camping
- Guided Tours



2.3 Capital Build and Maintenance

The Westland District invested \$130,000 in capital works mainly in the Lake Kaniere Stage 1 project to take the trail off road. A further \$90,000 was invested by Trustpower in the replacement high water route bridge in the Kawhaka section. This was in addition to the \$80,000 contract with Destination Westland to maintain the trail.

The Grey District Council had no capital expenditure. Its maintenance expenditure was \$52,590

2.4 Economic Benefits/Return

The estimated direct spend for the trail is \$13.7 million. This is based on 14,505 riders spending on average \$248 per night and staying 3.8 nights. This additional visitor expenditure generates about \$5.3 million in GDP for the West Coast economy.



3. West Coast Wilderness Trail Performance

The West Coast Wilderness Trail has continued to perform at the top of the Nga Haerenga network of great rides. The indicators below are taken from the New Zealand Cycle Trails Survey Results for the year. The West Coast Wilderness Trail is one of the top suppliers of surveys to data.

Performance of the West Coast Wilderness Trail comparison with the Average for All Trails

Source: New Zealand Cycle Trails Survey Data

Indicator	WCWT	Average for all 22 Trails	Comparison
Overall Performance			
Net Promoter Score	88	75	↑
Overall Satisfaction	9.4	9.1	↑
Riders Visiting because of the Trail	87%	74%	↑
Nights Stayed	3.8	3.55	↑
Extended Stay	20%	16%	↑
Extra Nights Stayed	2.56	2.49	↑
Travel Party Number	4.53	3.48	↑
Time spent on the trail (greatest category)	4 days (45%)	1-4 hrs (41%)	↑
Regional Economic Contribution per Person	\$1044	\$709	↑
Regional Economic contribution Per Person Per Night	\$264	\$214	↑
Ratings			
Info on NZCT website	4.6	4.4	↑
Info on Wilderness Trail Website	4.6	4.5	↑
Trail Brochure	4.5	4.4	↑
Bike Hire	4.6	4.4	↑
Quality of hire bikes	4.7	4.4	↑
Bike Shuttle	4.7	4.5	↑
Guiding	4.5	4.3	↑
Toilet Facilities	3.8	3.8	↔
Accommodation	4.4	4.3	↑
Food and beverage	3.9	3.9	↔
Scenery	4.9	4.8	↑
Trail difficulty (compared to as expected)	4.6	4.5	↑
Trail gradient/slope (compared to expected)	4.6	4.5	↑
Condition of surface	4.6	4.3	↑
Directional and other signage	4.5	4.3	↑
Overall Trail Conditions	4.7	4.5	↑

4. Rider Demographics and Market Profile

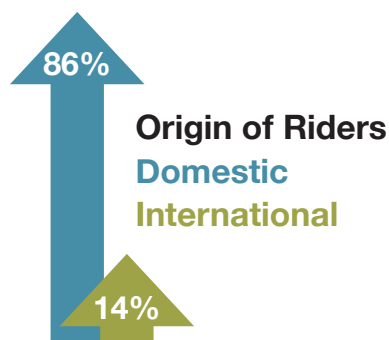
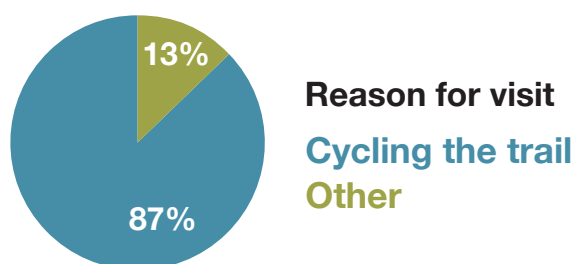
The information below provides an insight into the nature of the West Coast Wilderness Trail rider. This has changed little over the years that the data has been collected. Key points from this include:

- Canterbury and Auckland are the main locations riders are from
- Most riders are over 50, the majority over 60
- Slightly more females ride the trail
- They travel in groups
- They have come to the region specifically to ride the trail

The infographic below provides a rider and market profile.

West Coast Wilderness Trail Key Economics Insights Summary 2019/20

JULY 2019 – JUNE 2020



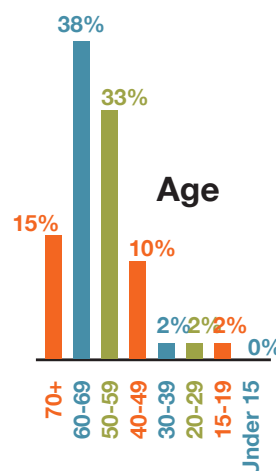
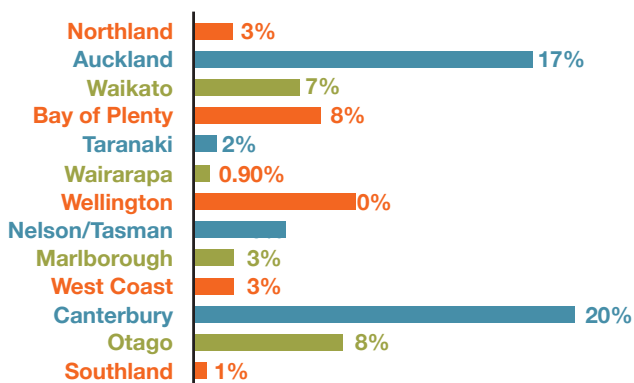
Additional Visitors
up to
10,000pa

Length of Stay
nights on trail
3.8

Spend per Rider
per night | on trail
\$248 | \$914

New Businesses
at least
5

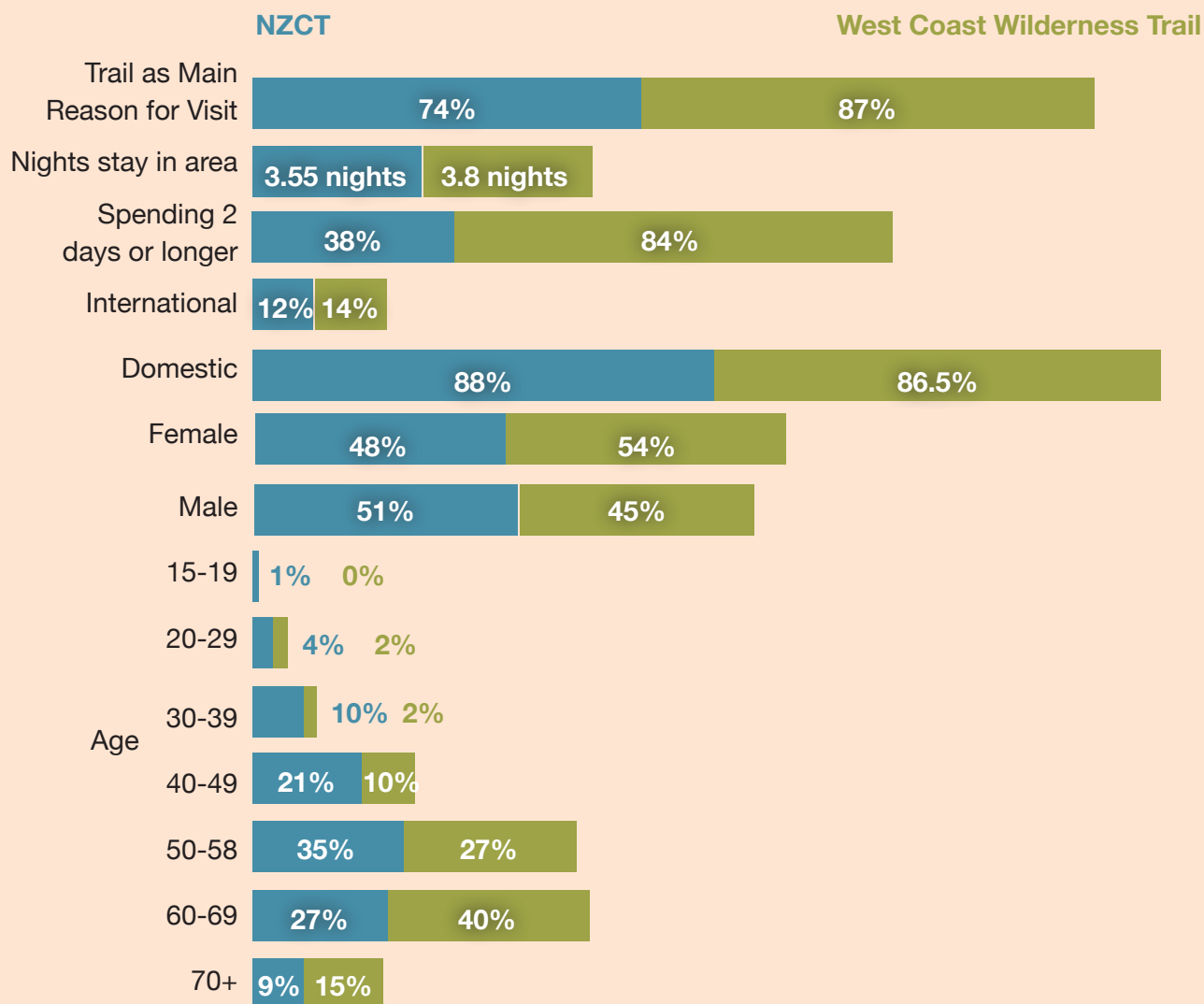
Origin - Domestic



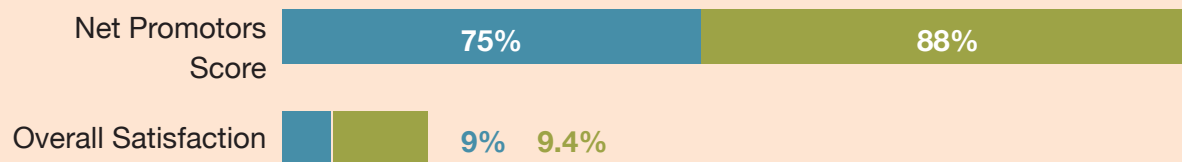
Total Direct Spend
\$13.7 million

Direct Business Investment for year
\$1 million

Rider Comparisons - New Zealand Cycle Trails v West Coast Wilderness Trail



Trail Performance



5. Conclusion

We move into a new environment where we must live with the management of Covid-19. To date, it has had the largest impact on the trail, halting visitors at the end of the peak season. Through this the trail has still performed exceptionally well across all indicators. Recognition of the value of this asset locally and economically has also grown. What seemed like a large investment at the time is now one of the region's main tourism drivers assisting with the economic recovery through Covid-19.



WEST COAST

WILDERNESS TRAIL

Quarterly Economic Contribution To Area

West Coast Wilderness Trail Sub-Committee Meeting

Creation Date

Thursday 1st of July 2021

About the Survey Data

The data in this report is from the survey work undertaken by the West Coast Wilderness Trail Trust. The Trust gains email addresses from riders continually throughout the year. These are loaded into an app that sends an automated invitation from the Trail Manager to the rider. This is undertaken by professional research company in Wellington to provide feedback. All 22 Nga Haerenga New Zealand Great Riders participate. Results are electronically compiled on the first day of every month throughout the year.

Within this report are four sets of data as follows:

The West Coast Wilderness Trail data for the past twelve months (620 riders)

The West Coast Wilderness Trail data for the last quarter (117 riders)

The New Zealand Cycle Trail collective results for all 22 Great rides in the last year (6012 riders)

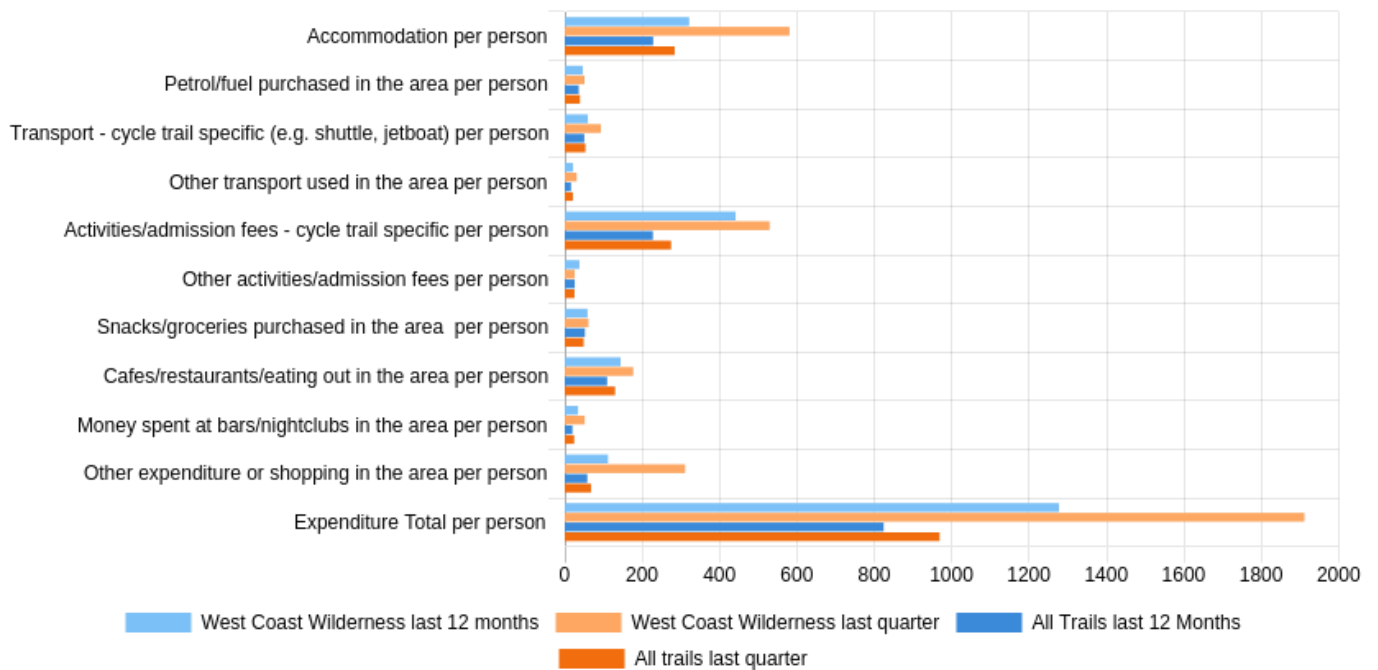
The New Zealand Cycle Trail collective results for the 22 Great rides for the last quarter (1349 riders)

The Wilderness Trail results are therefore being compared against the New Zealand Cycle Trails average.

This economic report is compiled quarterly.

Regional Economic Contribution Per Person

West Coast Wilderness last 12 months (n = 620)
 West Coast Wilderness last quarter (n = 117)
 All Trails last 12 Months (n = 6012)
 All trails last quarter (n = 1349)



Regional Economic Contribution Per Person

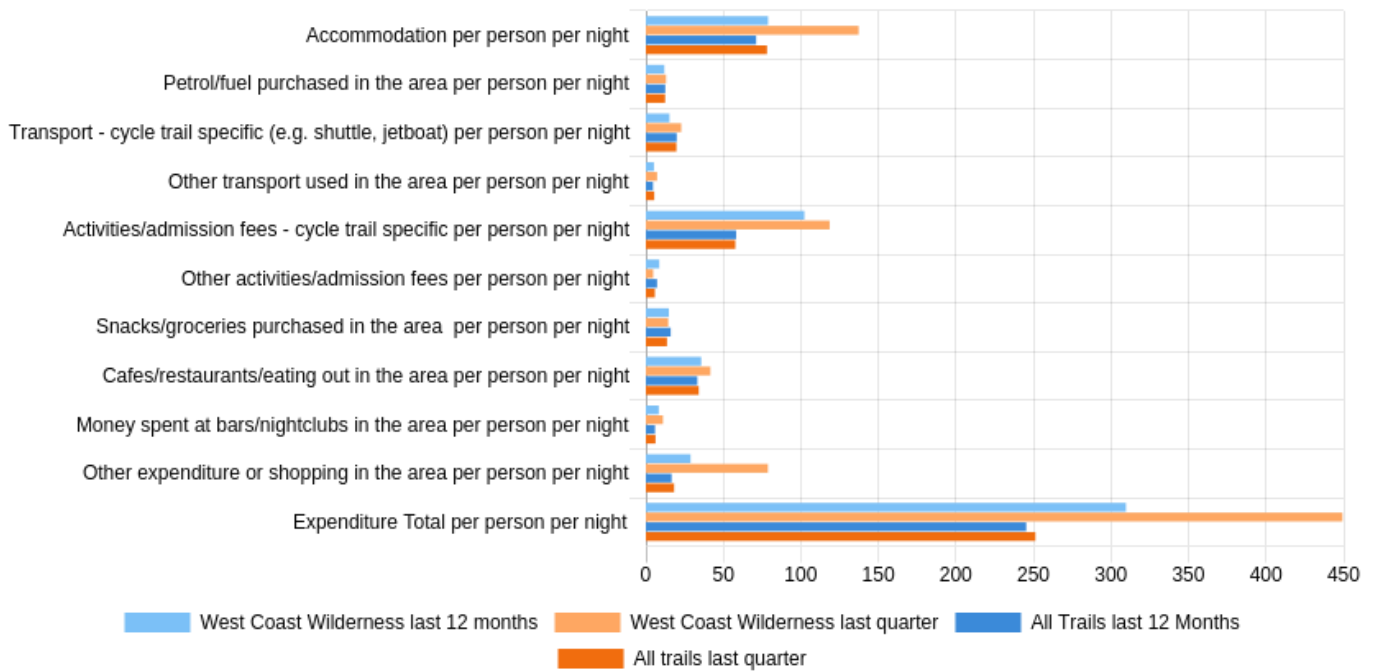
West Coast Wilderness last 12 months (n = 620)
 West Coast Wilderness last quarter (n = 117)
 All Trails last 12 Months (n = 6012)
 All trails last quarter (n = 1349)

	West Coast Wilderness last 12 months	West Coast Wilderness last quarter	All Trails last 12 Months	All trails last quarter
Sample Size (n)	620	117	6012	1349
	Average	Average	Average	Average
Accommodation per person	321.4	580.6	228.3	283.9
Petrol/fuel purchased in the area per person	46.4	50.8	36.1	39.2
Transport - cycle trail specific (e.g. shuttle, jetboat) per person	59.6	93.3	50.4	53.4
Other transport used in the area per person	21.3	30.8	16	21
Activities/admission fees - cycle trail specific per person	441.3	529.2	227.7	274.6
Other activities/admission fees per person	37.7	25.7	25.8	25.1
Snacks/groceries purchased in the area per person	58.8	61.2	52	48.8
Cafes/restaurants/eating out in the area per person	144.3	176.9	109.4	130
Money spent at bars/nightclubs in the area per person	34.2	51.4	19.8	24.3
Other expenditure or shopping in the area per person	111.7	310.9	58.2	68

	West Coast Wilderness last 12 months	West Coast Wilderness last quarter	All Trails last 12 Months	All trails last quarter
Sample Size (n)	620	117	6012	1349
	Average	Average	Average	Average
Expenditure Total per person	1276.7	1910.9	823.8	968.3

Regional Economic Contribution Per Person Per Night

West Coast Wilderness last 12 months (n = 620)
 West Coast Wilderness last quarter (n = 117)
 All Trails last 12 Months (n = 6012)
 All trails last quarter (n = 1349)



Regional Economic Contribution Per Person Per Night

West Coast Wilderness last 12 months (n = 620)
 West Coast Wilderness last quarter (n = 117)
 All Trails last 12 Months (n = 6012)
 All trails last quarter (n = 1349)

	West Coast Wilderness last 12 months	West Coast Wilderness last quarter	All Trails last 12 Months	All trails last quarter
Sample Size (n)	620	117	6012	1349
	Average	Average	Average	Average
Accommodation per person per night	78.8	137.2	71.1	78.1
Petrol/fuel purchased in the area per person per night	11.9	13	12.5	12.4
Transport - cycle trail specific (e.g. shuttle, jetboat) per person per night	15.2	22.8	19.9	19.7
Other transport used in the area per person per night	5.2	7.2	4.6	5.4
Activities/admission fees - cycle trail specific per person per night	102.2	118.5	58.2	57.7
Other activities/admission fees per person per night	8.6	4.7	7.2	5.8
Snacks/groceries purchased in the area per person per night	14.8	14.4	16	13.6

	West Coast Wilderness last 12 months	West Coast Wilderness last quarter	All Trails last 12 Months	All trails last quarter
Sample Size (n)	620	117	6012	1349
	Average	Average	Average	Average
Cafes/restaurants/eating out in the area per person per night	35.7	41.6	33.2	34.1
Money spent at bars/nightclubs in the area per person per night	8.3	11	5.9	6.2
Other expenditure or shopping in the area per person per night	28.8	78.7	16.6	18.2
Expenditure Total per person per night	309.6	449.2	245.3	251.2

Appendix

Segments

- **West Coast Wilderness last 12 months**

Organisation — Name: Is equal to 'West Coast Wilderness Trail'

Result — Completion Date: Is between 12 months ago on the first day of the month (01/07/2020) and the last day of last month (30/06/2021)

- **West Coast Wilderness last quarter**

Organisation — Name: Is equal to 'West Coast Wilderness Trail'

Result — Completion Date: Is between 3 months ago on the first day of the month (01/04/2021) and the last day of last month (30/06/2021)

Benchmarks

- **All Trails last 12 Months**

Result — Completion Date: Is between 12 months ago on the first day of the month (01/07/2020) and the last day of last month (30/06/2021)

- **All trails last quarter**

Result — Completion Date: Is between 3 months ago on the first day of the month (01/04/2021) and the last day of last month (30/06/2021)

Report



DATE: 13 July 2021
TO: West Coast Wilderness Trail Subcommittee
FROM: Group Manager: District Assets

CURRENT PROJECTS UPDATE REPORT

1 SUMMARY

- 1.1** The purpose of this report is to update the Committee on the status of current (2021/2022) projects being undertaken by the District Assets Projects Team.

2 CURRENT PROJECTS

2.1 KANIERE WATER RACE BRIDGES

Scope: Kanierie Water Race Bridge Upgrades and new 20m bridge to meet NZ Cycle Design Standard.

Priority One: Bridges Replace 13m, new 20m.

(Includes two structures to be replaced that are under-width at 0.9m and 0.95m current clearance. The recommended minimum is 1.2m with a preference for 1.5m. The desirable width on this section of trail is no less than 1.5m due to its accessibility and relatively high number of riders particularly in the peak summer season. There is also many locals running or walking this trail section and the trend has shifted to more riders now since trail data was first made available in 2018 especially in peak season)

Priority Two: Bridges upgrade to design standard.

(Includes two bridge structures and one boardwalk to be replaced that are under-width, but not currently considered a major detraction for rider user experience.)

Key Milestones:

Survey: Completed by Winnie Dowell-de Quadros.

Design: Partially completed by Winnie Dowell-de Quadros.

Tender and Construct: Not started - 5 months duration.

Budget: \$300,000 (21/22)

2.2 MAHINAPUA VIEWING PLATFORM

Scope: Mahinapua Viewing Platform for riders major photo stop, overlooking the Mahinapua Creek, wetlands and southern mountains.

Key Milestones:

Design timber structure.
Construct new timber viewing platform.
Tender and Construct.
(There is no start date for the above, as of yet.)

Budget: \$32,000 (20/21) \$38,000 (21/22)



2.3 MINOR INFRASTRUCTURE (Shelters, Toilets, Stands, Signage.)

Scope: New toilets and shelters to meet NZ Design Guideline Standard, for distance between these structures.

Priority One: Purchase and install toilets and shelters (Milltown & Kawhaka)

Key Milestones:

Procure unisex toilets.

Procure builder for shelters.
(There is no start date for the above, as of yet.)

Budget: \$74,000 (20/21) \$36,000 (21/22)

2.4 OTHER PROJECTS IN THIS FINANCIAL YEAR

Taramakau Major Maintenance.
Budget: \$50,000 (21/22)

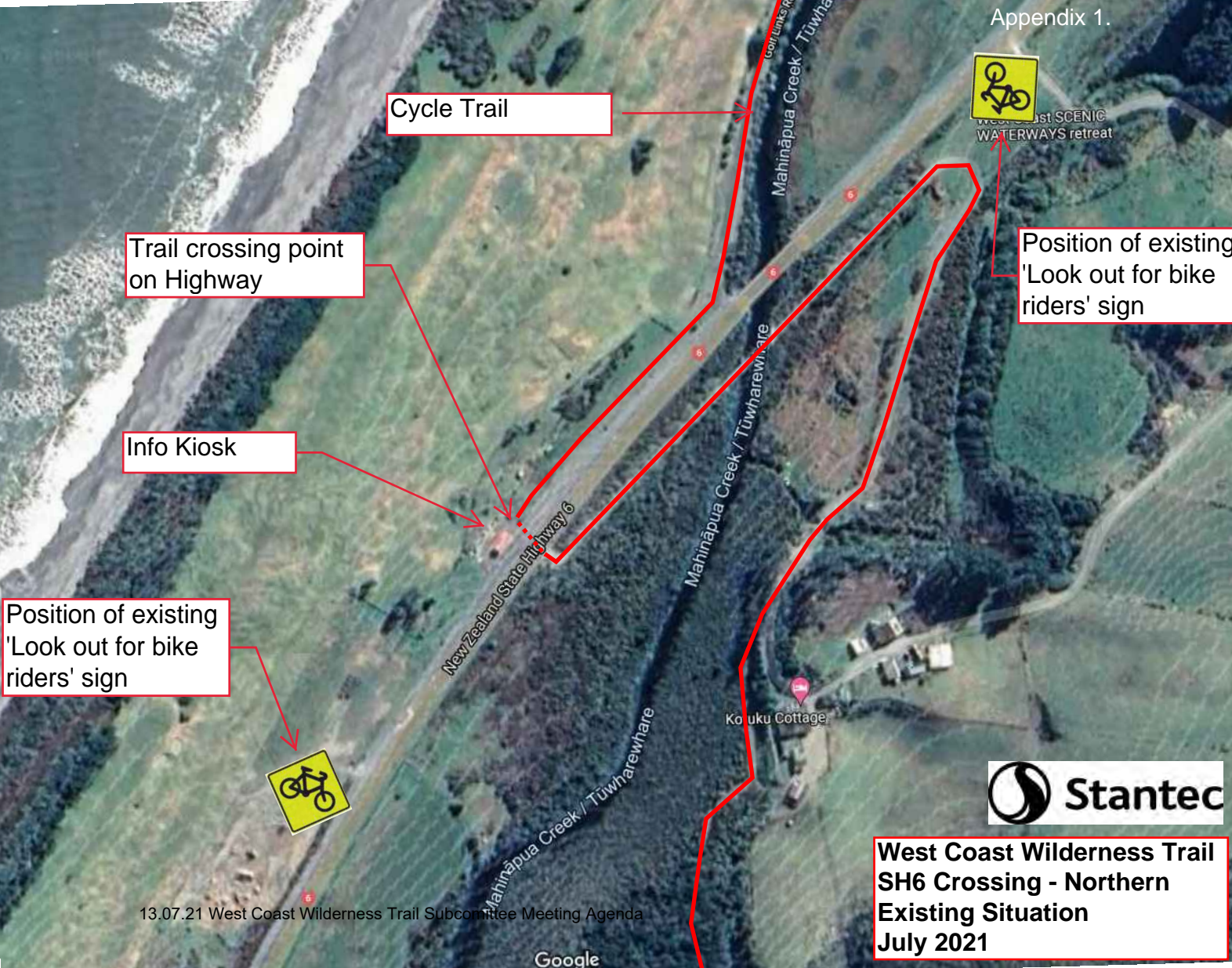
Wainihinihi Wet Weather Route Bridge.
Budget: \$160,000 (20/21) \$160,000 (21/22)

3. RECOMMENDATION

- A) That the Current Projects Update Report from the Asset Manager dated 13 July 2021 be received.

Michael Teasdale
Asset Manager

Appendix 1: WCWT SH6 North Crossing DRAFT CONCEPT Layout



Cycle Trail

Trail crossing point on Highway

Info Kiosk

Position of existing 'Look out for bike riders' sign



Position of existing 'Look out for bike riders' sign



**West Coast Wilderness Trail
SH6 Crossing - Northern
Existing Situation
July 2021**

WCWT, SH6 Crossing – Northern: Existing Situation



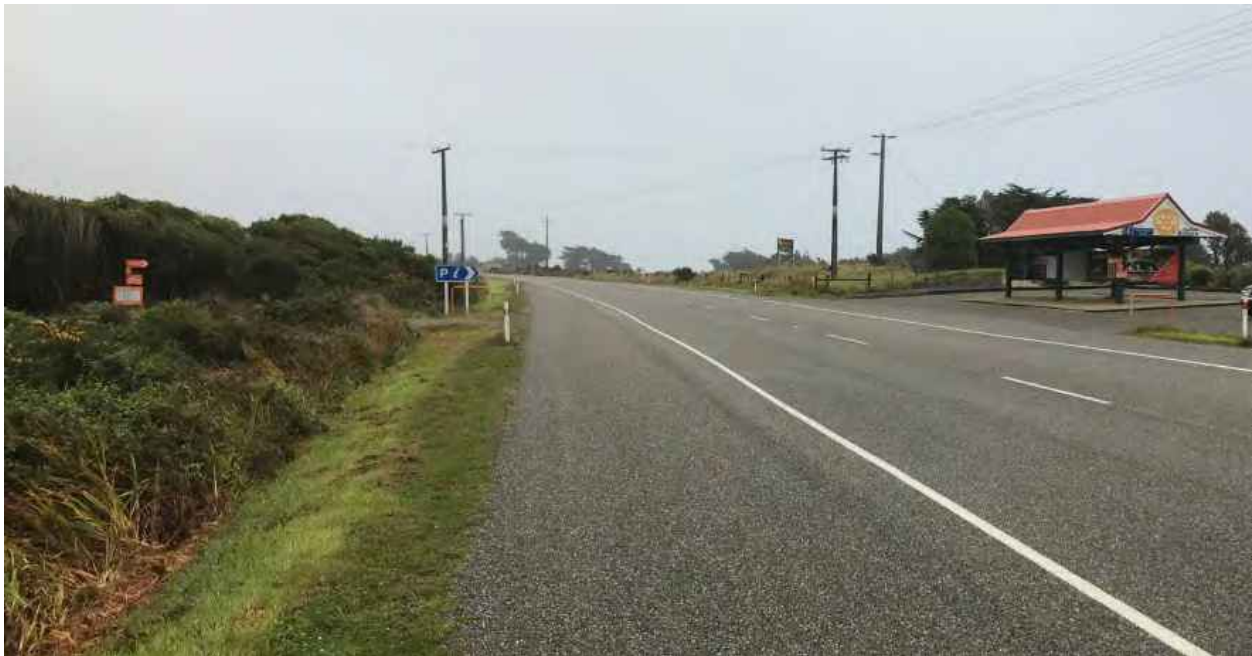
- No control of cyclists prior to arriving to the road
- Multiple signage on one post (mix of information and a warning)
- No compulsory signage e.g. give way



- Crossing appears to be to kiosk
- Mixing of two different user groups – kiosk related, trail related
- No signage or markings to indicate cyclists give way
- Wide crossing, and slightly uphill



- Limited and obstructed view to the south



- Wide road shoulder, which provides a slip lane for southbound traffic heading to the kiosk (to pull into to get out of the traffic lane)
- Wide crossing



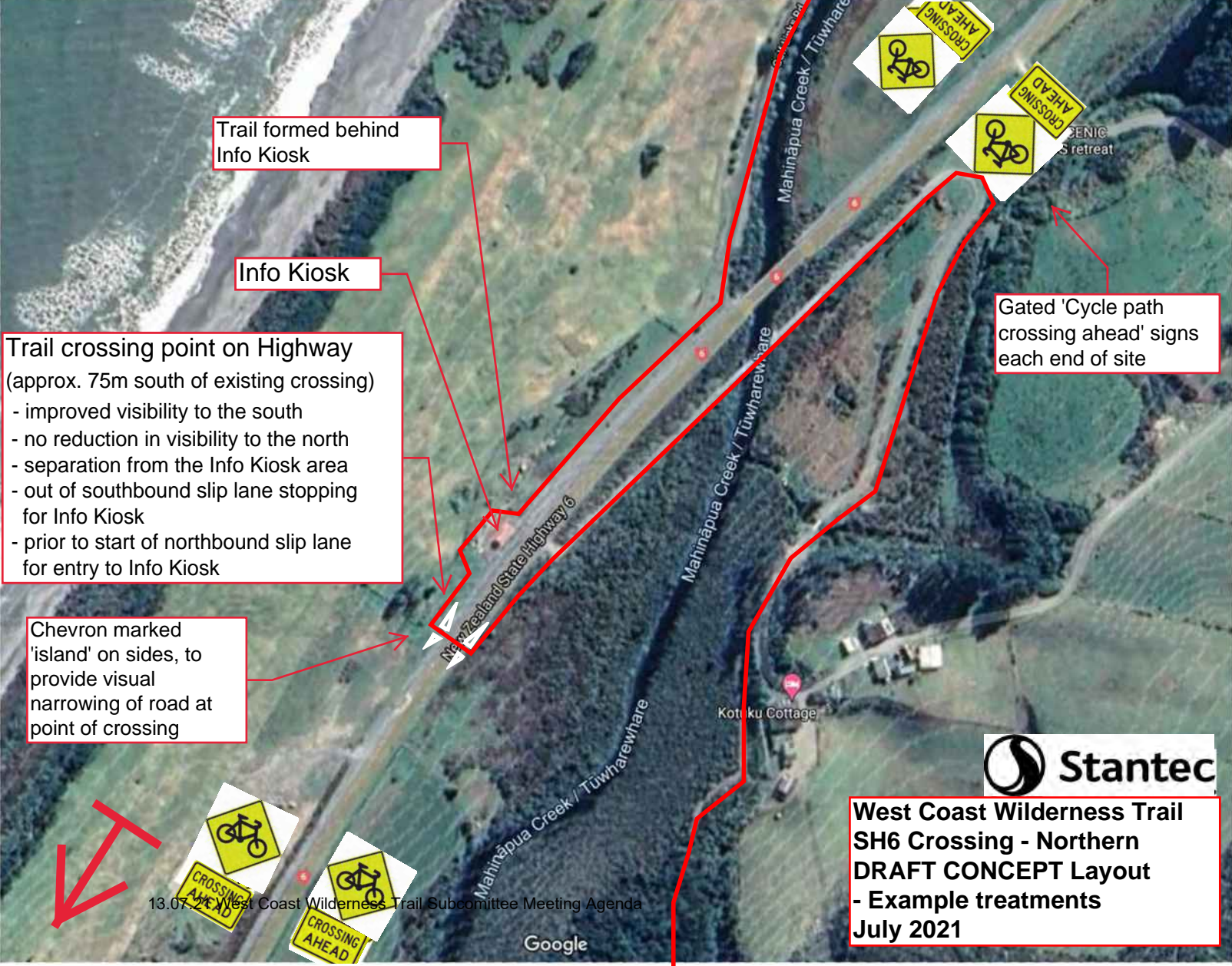
- Grab rails not aligned at crossing
- No signage or markings to indicate cyclists give way



Warning sign – south of crossing



Warning sign – north of crossing



Trail formed behind Info Kiosk

Info Kiosk

Trail crossing point on Highway
(approx. 75m south of existing crossing)

- improved visibility to the south
- no reduction in visibility to the north
- separation from the Info Kiosk area
- out of southbound slip lane stopping for Info Kiosk
- prior to start of northbound slip lane for entry to Info Kiosk

Chevron marked 'island' on sides, to provide visual narrowing of road at point of crossing

Gated 'Cycle path crossing ahead' signs each end of site



**West Coast Wilderness Trail
SH6 Crossing - Northern
DRAFT CONCEPT Layout
- Example treatments
July 2021**

Info Kiosk

AC sealed section of trail each side of crossing

Chevron marked 'island' on sides, to provide visual narrowing of road at point of crossing

New Trail Crossing location, approx 75m south of existing crossing



**West Coast Wilderness Trail
SH6 Crossing - Northern
DRAFT CONCEPT Detail
July 2021**

WCWT, SH6 Crossing – Northern: DRAFT CONCEPT Layout

[Based on: Great Taste Trail, SH6 crossing, Belgrove, Nelson: 100km/hr speed limit environment]

The Images below are an example of proposed treatments.



- AC sealed approach – nominal 20m length, nominal minimum 2.5m width.
- Early warning signage – ‘STOP’ ‘Road Crossing’
- Road side drain and/or vegetation prevents short-cutting.



- Early warning signage – ‘STOP’ ‘Road Crossing’.
- White centreline – nominal 8m length.
- White Dragons Teeth on cycle path – to increase awareness of changing environment
- STOP sign just prior to crossing (positioned to not obstruct view of traffic).



- STOP sign just prior to crossing (positioned to not obstruct view of traffic).
- Grab rail with retro-reflective tape in 100mm bands.
- Yellow Limit line.



- Direction of travel is straight across Highway.
- Yellow Limit line.
- Chevron marked 'island' on sides of crossing, to provide visual narrowing of road to road users, at point of crossing.

Report to Committee



DATE: 13 July 2021
TO: West Coast Wilderness Trail Subcommittee
FROM: Chief Executive

ENDORSEMENT OF TERMS OF REFERENCE – CYCLING AND WALKING SUBCOMMITTEE AND APPOINTMENT OF COMMITTEE MEMBERS

1. Summary

- 1.1. The purpose of this report is to increase the scope of the role of the Subcommittee and endorse the amended Terms of Reference (ToR) and appointment of additional members to the Cycling and Walking Subcommittee.
- 1.2. This issue arises from the need to ensure that stakeholders are represented to oversee the Governance of the West Coast Wilderness Trail (WCWT) and incorporate stakeholders in cycling and walking activities within the Westland District.
- 1.3. Council seeks to meet its obligations under the Local Government Act 2002 and the achievement of the District Vision adopted by the Council in June 2021, which are set out in the Long Term Plan 2021 - 31. Refer page 2 of the agenda.
- 1.4. This report concludes by recommending that the WCWT Subcommittee endorses the change of name of the subcommittee to the “Cycling and Walking Subcommittee”, the changes to the Terms of Reference, and the additional membership of the Subcommittee.

2. Background

- 2.1 The reason the report has come before the Committee is due to the Capital Projects and Tenders Committee Meeting on the 12 May 2020, which adopted the Terms of Reference for the West Coast Wilderness Trail Subcommittee.
- 2.2 As part of this, Council determined that a Capital Projects and Tenders Committee was required to provide oversight of the Capital Works Programme and also to Award Tenders.
- 2.3 The Cycling and Walking Subcommittee will report directly to the Capital Projects and Tenders Committee.

3. Current Situation

- 3.1. The current situation is that the amended ToR for the Cycling and Walking Subcommittee must be adopted by the Capital Projects and Tenders Committee. In the ToR, the names of appointed members must be stated.

4. Options

- 4.1. Option 1: Endorse the change of name of the Subcommittee, and include the following additional representation as follows:
 - Walking Access NZ District representative
 - Westland Mountain Bike Club representative.
- 4.2. Option 2: Request further changes to the ToR and appointees.
- 4.3. Option 3: Not endorse the proposed change of name.

5. Risk Analysis

- 5.1. Risk has been considered and no risks have been identified.

6. Health and Safety

- 6.1. Health and Safety has been considered and no items have been identified.

7. Significance and Engagement

- 7.1. The level of significance has been assessed as being minor as it is administrative in nature, and is therefore assessed as being of low significance.
- 7.2. Public consultation was completed as part of the 2021-2031 Long Term Plan submissions, whereby a large contingent of the Westland Mountain Bike Club members supported a number of future projects not linked to the West Coast Wilderness Trail.
- 7.3. Further public community engagement is not considered necessary.

8. Assessment of Options (including Financial Considerations)

- 8.1. Option 1 – Endorse the change of name to the Cycling and Walking Subcommittee and include the additional membership to the Subcommittee as noted.
- 8.2. Option 2 – Request further changes to the ToR and appointees.
- 8.3. Option 3 – Not endorse the proposed change.
- 8.4. There are no financial implications to Option 1.

9. Preferred Option(s) and Reasons

- 9.1. The preferred option is Option 1.
- 9.2. The reason that Option 1 has been identified as the preferred option is that this will enable the Cycling and Walking Subcommittee to continue overseeing the governance of the West Coast Wilderness Trail, and provide an avenue to review additional enhancements to cycling and walking within the District. This will enable Council to work with key stakeholder groups in a formal committee structure, and provide the future direction and priorities of the Subcommittee. The Subcommittee will work closely with Council staff to ensure the Asset Management Plans meet the overall objectives of Council.

10. Recommendation(s)

- 10.1. That the report be received.

10.2. That the West Coast Wilderness Trail Subcommittee endorse the change of name of the Committee to the Cycling and Walking Subcommittee and adopt the amended Terms of Reference, including the additional membership:

Current:

- Chairperson (WDC appointed representative and appointed by the Chair of the Capital Projects and Tenders Committee)
- Iwi Representation
- Ex-Officio – Mayor
- Grey District Council Representative
- Chair - West Coast Wilderness Trail Trust
- Trail Manager - West Coast Wilderness Trail Trust
- Trustpower Representative
- Department of Conservation – Hokitika Operations Manager (or representative)

Additional:


- **Walking Access NZ District representative**
- **Mountain Bike Club representative.**

10.3. That it be a **recommendation to the Capital Projects and Tenders Committee** to adopt the change of name of the Subcommittee, including the Terms of Reference, and approve the additional membership to the Subcommittee as noted above.

Simon Bastion
Chief Executive

Appendix 1: Amended Terms of Reference – Cycling and Walking Subcommittee

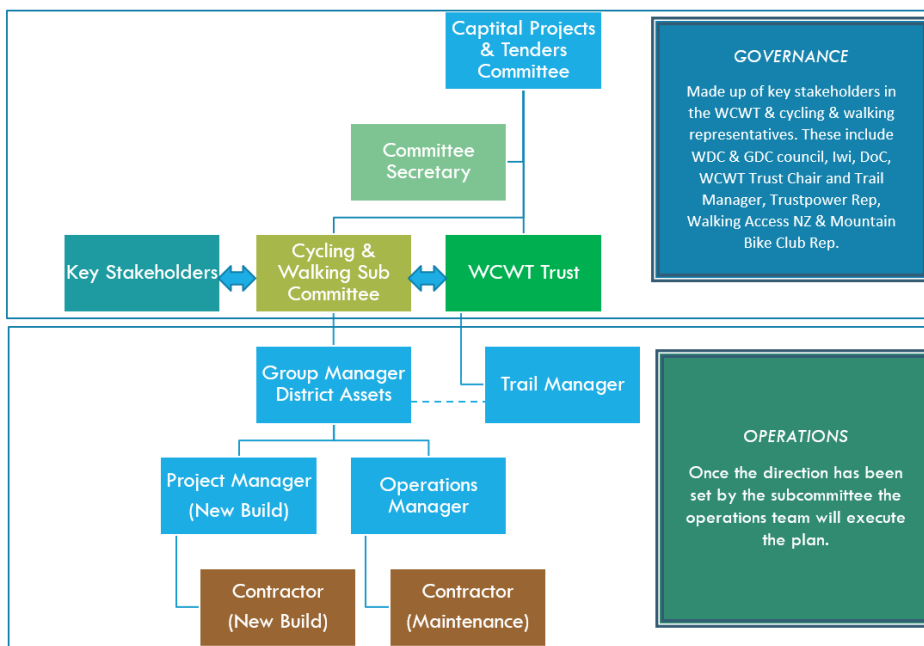
TERMS OF REFERENCE West Coast Wilderness Trail Subcommittee

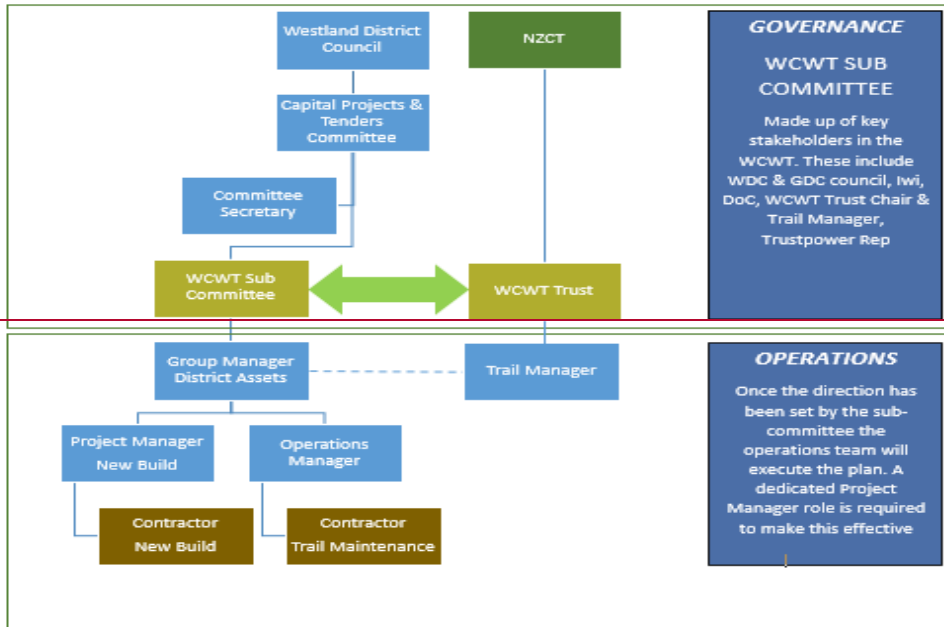
	Authorising Body	Mayor / Council
	Status	Subcommittee of Capital Project and Tenders Committee
	Title	West Coast Wilderness Trail <u>Cycling & Walking</u> Subcommittee
	Approval Date	
	Administrative Support	Chief Executive Office

Purpose

The purpose of the ~~West Coast Wilderness Trail~~ Cycling & Walking Subcommittee is to oversee the Governance of the West Coast Wilderness Trail and incorporate stakeholders in cycling and walking activities within Westland District. The makeup of the Subcommittee is to ensure stakeholders are represented to provide guidance on the future strategies~~strategy of the trail in relation to Cycling and Walking~~.

Walking & Cycling Governance Structure





Responsibility

Formatted: Tab stops: 4.76 cm, Left

The West Coast Wilderness Trail Cycling & Walking Subcommittee is responsible for the following:

- Defining the overall Strategic Plan for the West Coast Wilderness Trail (WCWT);
- Ownership of the development and maintenance of the WCWT Cycling & Walking Asset Management Plan;
- Defining the priority projects with the Cycling & Walking WCWT Asset Management Plan;
- Reviewing and defining financial sustainability of each proposal;
- Ensuring the prioritisation of projects reflects the community/user needs;
- Supports the NZ Cycle Trail Nga Haerenga network program and strategy and meet the criteria set by Major Great Rides NZ;
- Working closely with all key stakeholders of the WCWT & other stakeholder organisations;
- Supporting Funding applications as applicable.

In connection with each Project, the Subcommittee shall receive regular reports from management containing such information it deems relevant to fulfil its mandate, including but not limited to information concerning:

- Project timetable, critical path events and progress to completion
- Major project milestones, including variance analysis and mitigation strategies

- Key issues or disputes and proposed mitigation strategies
- Project budget updates, showing actual expenditures versus budget, use of contingencies and projected final expenditures
- Assist with bridging project barriers outside the influence of staff

Report to the Capital Projects and Tenders Committee on a regular basis to provide updates as required.

DELEGATIONS TO THE COMMITTEE:

The ~~West Coast Wilderness Trail~~Cycling & Walking Subcommittee shall have the following delegated powers and be accountable to Council for the exercising of these powers. In exercising the delegated powers, the Subcommittee will operate within:

- Policies, plans, standards or guidelines that have been established and approved by Council;
- The overall priorities of Council;
- The needs of Iwi and the local communities; and
- The approved budgets for the activity.

The ~~West Coast Wilderness Trail~~Cycling & Walking Subcommittee shall have delegated authority to:

- Power to co-opt other members as appropriate
- All powers necessary to perform the Subcommittee's responsibilities except:
 - Powers that the Council cannot legally delegate or has retained for itself
 - Where the Committee's responsibility is limited to making a recommendation only
 - Deciding significant matters for which there is high public interest and which are controversial
 - The commissioning of reports on new policy where that policy programme of work has not been approved by the Council

Power to Delegate

The ~~West Coast Wilderness Trail~~Cycling & Walking Subcommittee may not delegate any of its responsibilities, duties or powers.

Membership

The ~~West Coast Wilderness Trail~~Cycling & Walking Subcommittee will comprise the following, one of which will be the chairperson:

Chairperson (WDC appointed representative and appointed by the Chair of the Capital Projects and Tenders Committee)
 Iwi Representatives
 Ex-Officio – Mayor
 Grey District Council Representative
 Chair - West Coast Wilderness Trail Trust
 Trail Manager - West Coast Wilderness Trail Trust
 Trustpower Representative
 Department of Conservation – Hokitika Operations Manager (or representative)
[Walking Access NZ District Representative](#)
[Mountain Bike Club Representative](#)

Chairperson

The Chairperson is responsible for:

- The efficient functioning of the Subcommittee;
- Setting the agenda for Subcommittee meetings in conjunction with the Chief Executive Officer; and
- Ensuring that all members of the Subcommittee receive sufficient timely information to enable them to be effective Committee members.

The Chairperson will be the link between the Subcommittee and Council staff.

The Chair appointment will be reviewed and appointed following the selection of Councillors at each new Triennium.

Quorum

The quorum at any meeting of the Subcommittee shall be Chairperson and any ~~two~~ **three** members.

Frequency of Meetings

The Committee shall meet as required but not less than quarterly.

Relationships with Other Parties

The Chief Executive is responsible for servicing and providing support to the Subcommittee in the completion of its duties and responsibilities. The Chief Executive shall assign council staff as required to provide these functions on his/her behalf.

The Chairperson may request the Chief Executive, staff in attendance, and all other parties other than Council Representatives the Trail Manager of the WCWT Trust and staff in attendance to leave the meeting for the duration of the discussion. The Chairperson will provide minutes for that part of the meeting.

The Subcommittee acknowledges that Waka Kotahi (NZTA) are a major stakeholder in the outcomes of the WCWT and plays an important part in aspects of the trail that impact on NZTA assets and rider safety. Whilst they do not form part of the membership of the Subcommittee that will be consulted on any aspect of the committees work that they will be impacted on.

The Subcommittee also recognises the role the Ministry of Business, Innovation and Employment (MBIE) plays in their role with Major Great Rides. Not only are they a provider of funding but also ensure the overall performance and health of the trail is maintained and were possible improved. The Subcommittee will seek support for the strategy and direction of the trail through MBIE on a regular basis or as stipulated in formal agreements.

Contacts with Media and Outside Agencies

The Subcommittee Chairperson is the authorised spokesperson for the Subcommittee in all matters where the Committee has authority or a particular interest.

Subcommittee members, including the Chairperson, do not have delegated authority to speak to the media and/or outside agencies on behalf of Council on matters outside of the Subcommittee's delegations.

The Chief Executive will manage the formal communications between the Subcommittee and its constituents and for the Committee in the exercise of its business. Correspondence with central government, other local government agencies or other official agencies will only take place through Council staff and will be undertaken under the name of the District Council.

Conduct of Affairs

The Subcommittee shall conduct its affairs in accordance with the Local Government Act 2002, the Local Government Official Information and Meetings Act 1987, the Local Authorities (Members' Interests) Act 1968, Council's Standing Orders and Code of Conduct.

Public Access and Reporting

Notification of meetings to the public and public access to meetings and information shall comply with Standing Orders, but it should be noted that:

- Workshop meetings solely for information and discussions and at which no resolutions or decisions are made may be held in accordance with Standing Orders.
- Extraordinary meetings of the Subcommittee must be held in accordance with Standing Orders.

The public may be excluded from the whole or part of the proceedings of the meeting and information withheld on one or more of the grounds specified in s.48 of the Local Government Official Information and Meetings Act 1987.

The Subcommittee shall record minutes of all its proceedings.

**The Terms of Reference were adopted by the
~~West Coast Wilderness Trail Capital Projects and Tenders Committee~~
Subcommittee, on the XX XXX 2020.**