



Rural Connectivity Group

Westland District Council
25 March 2021

Gill Evans
Community Engagement Manager



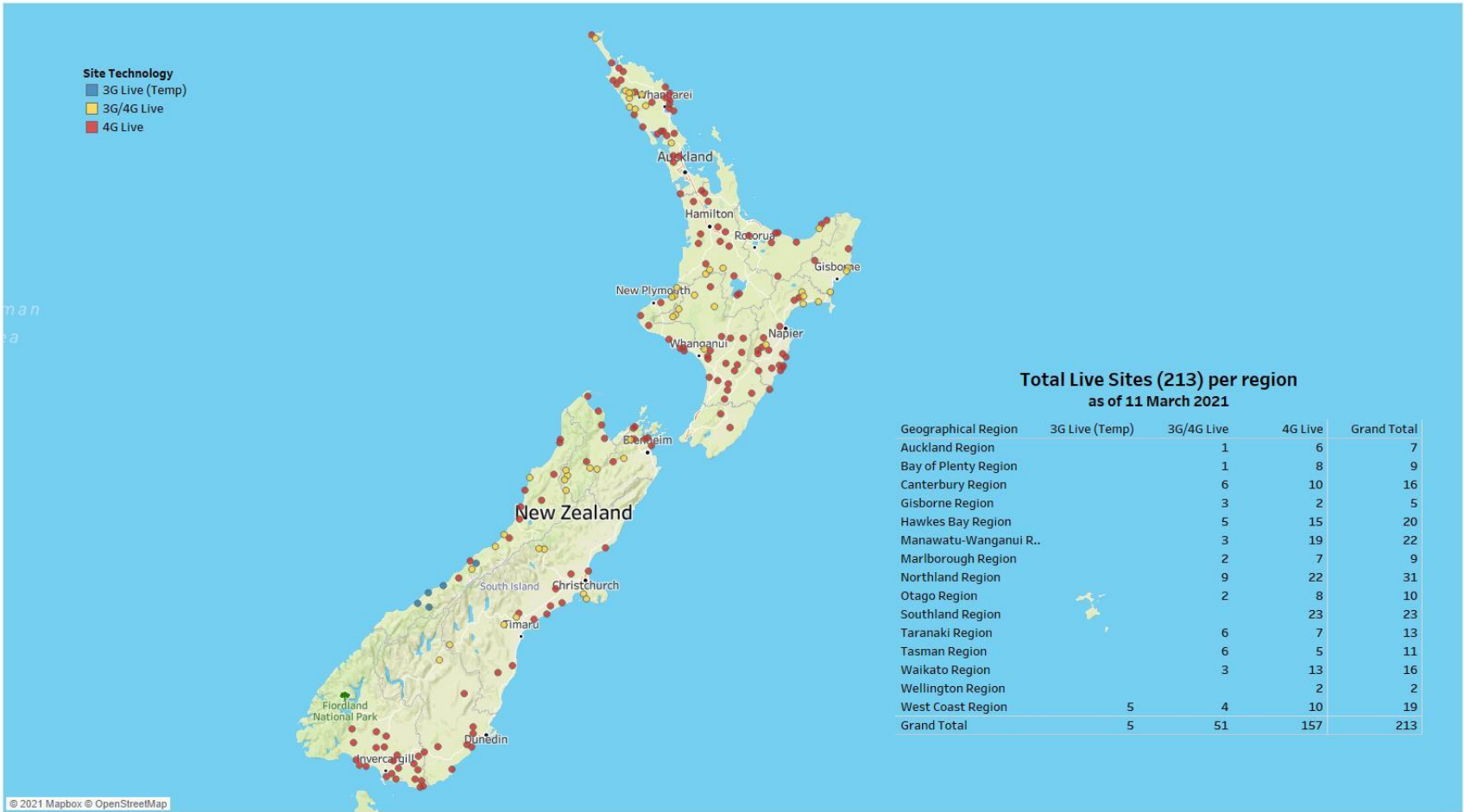
Increased connectivity in the regions to bridge the digital divide

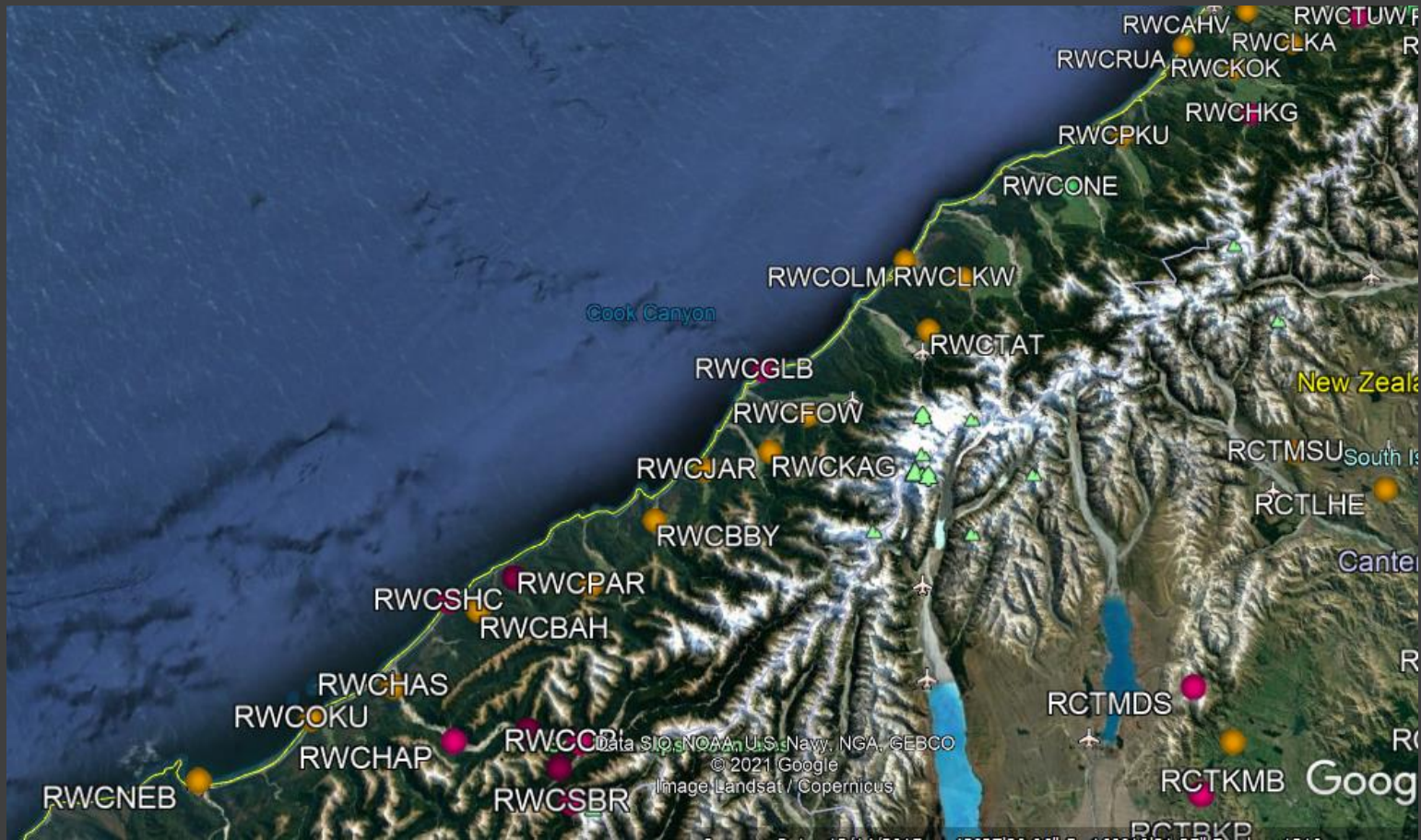
- \$150 million from Telecommunications Development Levy
- \$75 million from Spark, Vodafone, 2degrees
- Further funding from PGF
- Over 500 cell sites built by Dec 2023.
- 4G Wireless Broadband - RBI2 targeted at end-users with less than 20 Mbps across all regions
- 3G - MBSF mobile coverage targeted at areas identified as having 'black spots' (no coverage from any operator - State highways and tourist sites in scope)
- Services provided by MNO's and/or one WISP



Where are we now?

- **213** sites live across NZ
- **Nearly 18,000** homes and businesses able to connect to 4G wireless broadband
- **Nearly 600KM** State highways covered with 3G
- **39** tourist hotspots
- **40** sites on average built each quarter





RCG sites
Westland

24 sites from Hokitika to Neils Beach

RCG sites live – Westland



Fox West

Tartare

Ruatapu

Lake Wahopo

Okarito Lagoon

Pukekura

Kokatahi

RCG Westland District Council

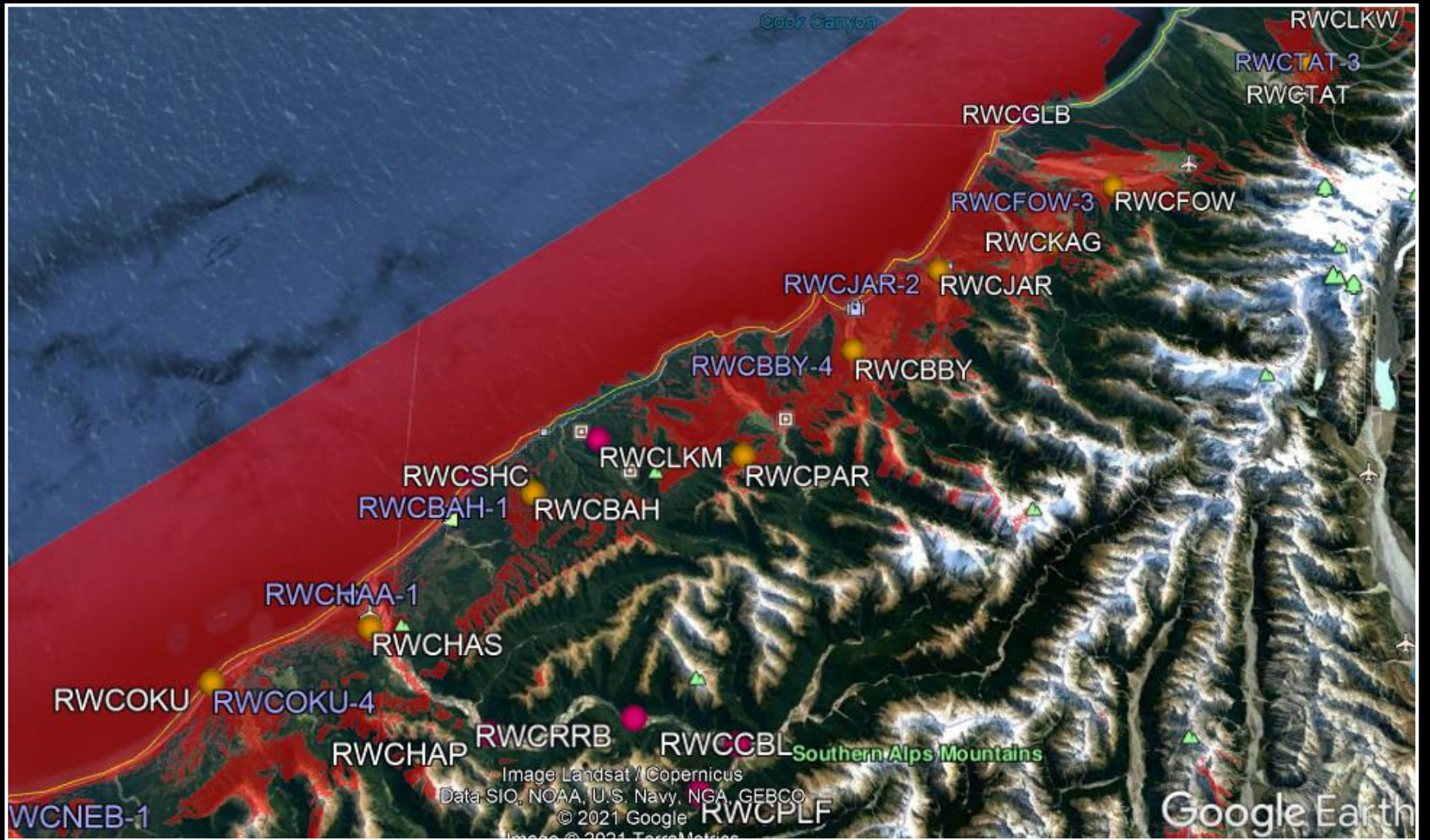
Site	Status	Fibre/Microwave	Predicted Live date
Lake Moeraki	Site acquisition	Fibre roll out	-
Ships Creek	In build	Fibre rollout	Q1 2022
Pleasant Flat	Expansion site	Fibre roll out (enabled microwave)	Still to be agreed
Gillespies Beach	RMA granted/awaiting DoC concession	-	Q1/Q2 2022
Roaring Billy Falls (Perm)	In situ	Fibre	Q1/Q2 2022
Haast Township	RMA underway	Fibre roll out	Q2 2022
Arahura Valley	Lease negotiations NIWA	-	Q1/Q2 2022
Bald Hill (Wifi Connect)	In build		Q4/Q1
Bruce Bay	Build underway	Fibre roll out	Q4 2021
Jacobs Ridge	Scoping	Fibre roll out	Q2 2022
Karangarua	In build	Fibre roll out	Q4 2021
Lake Kaniere	Lease negotiations and dependant on backhaul from Arahura Valley	-	Q2 2022
Neils Beach	In build	Fibre roll out (enabled microwave)	Q4 2021
Okuru	Built	Fibre roll out Note: temp backhaul solution	Q4/Q1
Oneone	Build May 2021	-	Q4 2021
Paringa	Scoping	Fibre roll out	Q3/Q4 2022
Wilderness Lodge	Make permanent	Fibre roll out	Q1/Q2 2022



RCG fibre
enabled sites
(aligned with Chorus
fibre rollout)

Running concurrently

- Stage 1 - Fox West to Haast
- Stage 2 - Haast to Lake Hawea



Predicted Coverage Neils Beach to Gillespies Beach

(Note: MNO's provide service)



Predicted Coverage Gillespies Beach to Hokitkia

(Note:MNO's provide service)

Okuru and Haast

Okuru

RCG remain committed to livening our Okuru site as soon as possible. Currently backhaul transmission into the West Coast is at capacity. RCG is actively working with providers to find a temporary solution whilst a permanent backhaul solution is developed that utilises the Chorus fibre link in to Haast when it is available.

Haast

RCG currently has a temporary site in Haast township delivering 3G services. The RMA consenting process is underway to secure a permanent location adjacent to the temporary facility.

Once consented, build and livening is scheduled for Spring/summer 2021.





Questions?

